



Lochinvar®

HIGH EFFICIENCY BOILERS & WATER HEATERS
Lochinvar Parts & Service Department
300 Maddox Simpson Pkwy, Lebanon, TN 37090.
Phone: 615-889-8900 • Fax: 615-882-2918
Email: parts_team@lochinvar.com

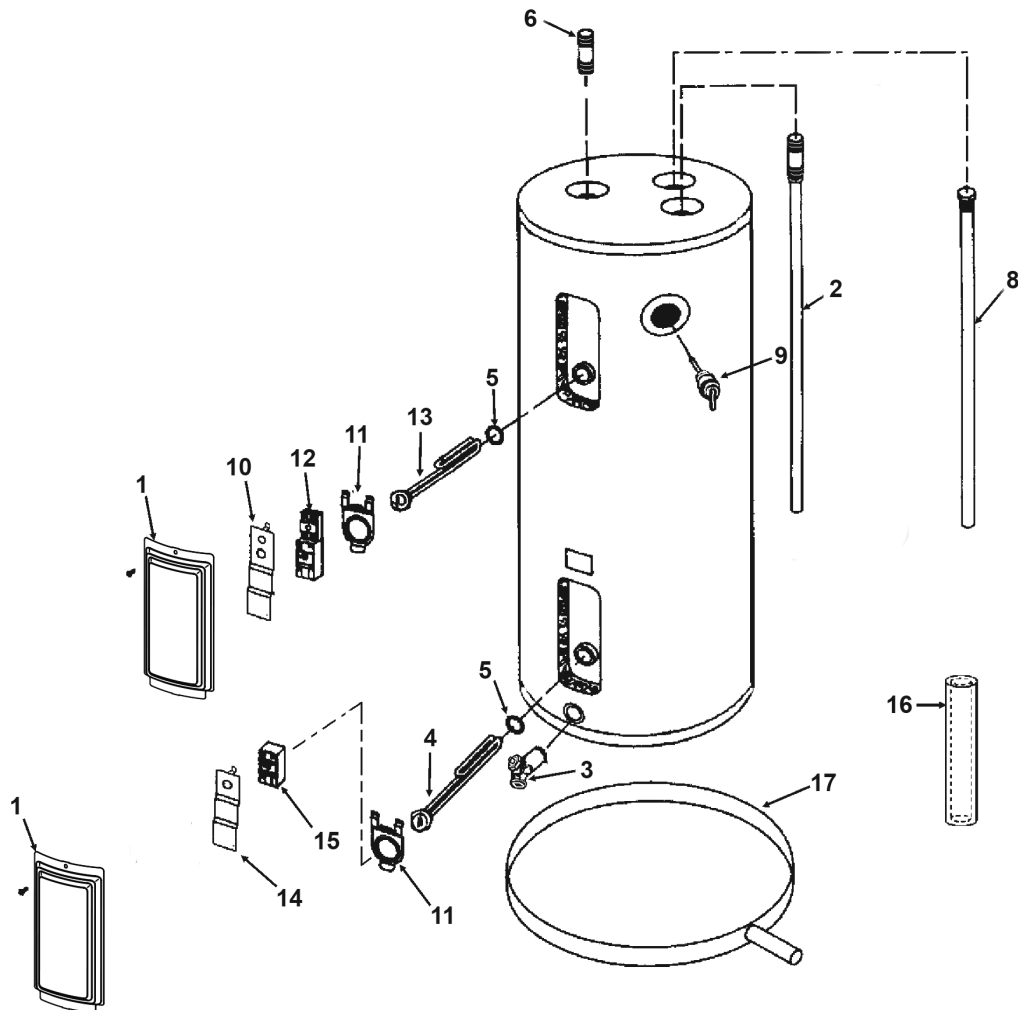
ELECTRIC

RESIDENTIAL WATER HEATER PARTS LIST

MODELS: KT(A)030 040 052 055

KS(A)030 040 & 050

KM(A)030 040 & 050



Lochinvar LLC
300 Maddox Simpson Pkwy, Lebanon, TN 37090.
1-615-889-8900
www.lochinvar.com

| Item | Description | KS(A)030 Series 100 | KS(A)040 Series 100 | KS(A)050 Series 110 | KM(A)030 Series 100 | KM(A)040 Series 100 | KM(A)050 Series 100 |
|------|---|------------------------|------------------------|------------------------|------------------------|------------------------|------------------------|
| 1 | Access Panel | 9003900005 | 9003900005 | 9003900005 | 9003900005 | 9003900005 | 9003900005 |
| 2 | Heat Trap/Dip Tube Combo | 9009142005 | 9009142005 | 9009316005 | 9003668005 | 9009138005 | 9009139005 |
| 3 | Drain Valve | 9009086015 | 9009086015 | 9009086015 | 9009086015 | 9009086015 | 9009086015 |
| 4 | Lower Element | 9000095015 | 9000095015 | 9000095015 | 9000095015 | 9000095015 | 9000095015 |
| 5 | Element Gasket | 9000308005 | 9000308005 | 9000308005 | 9000308005 | 9000308005 | 9000308005 |
| 6 | Nipple w/Heat Traps | 9003936015 | 9003936015 | N/A | 9003936015 | 9003936015 | 9003936015 |
| 7 | Hot Outlet w/Heat Trap* | N/A | N/A | 9009317005 | N/A | N/A | N/A |
| 8 | Primary Anode Rod (6 yr Alum.) | 9003944005 | 9003944005 | 9003944005 | 9003944005 | 9003944005 | 9000029005 |
| 9 | T&P Relief Valve | 9002403015 | 9002403015 | 9002403015 | 9002403015 | 9002403015 | 9002403015 |
| 10 | Terminal Cover w/High Limit | 9002438015 | 9002438015 | 9002438015 | 9002438015 | 9002438015 | 9002438015 |
| 11 | Thermostat Bracket | 9003898215 | 9003898215 | 9003898215 | 9003898215 | 9003898215 | 9003898215 |
| 12 | Upper Thermostat w/High Limit | 9001954015 | 9001954015 | 9001954015 | 9001954015 | 9001954015 | 9001954015 |
| 13 | Upper Element | 9000095015 | 9000095015 | 9000095015 | 9000095015 | 9000095015 | 9000095015 |
| 14 | Terminal Cover | 9002276015 | 9002276015 | 9002276015 | 9002276015 | 9002276015 | 9002276015 |
| 15 | Lower Thermostat | 9000507015 | 9000507015 | 9000507015 | 9000507015 | 9000507015 | 9000507015 |
| 16 | Pipe Insulation | 9002445005 | 9002445005 | 9002445005 | 9002445005 | 9002445005 | 9002445005 |
| 17 | 20" Dia. Aluminum Drain Pan w/Side Drain | 9000714005 | 9000714005 | 9000714005 | 9000714005 | 9000714005 | 9000714005 |
| 17 | 22" Dia. Aluminum Drain Pan w/Side Drain | 9001609005 | 9001609005 | 9001609005 | 9001609005 | 9001609005 | 9001609005 |
| 17 | 24" Dia. Aluminum Drain Pan w/Side Drain | 9002769005 | 9002769005 | 9002769005 | 9002769005 | 9002769005 | 9002769005 |
| 17 | 28" Dia. Aluminum Drain Pan w/Side Drain | 9001608005 | 9001608005 | 9001608005 | 9001608005 | 9001608005 | 9001608005 |

* Hot Outlet w/Heat Trap not pictured.

| Item | Description | KT(A)030 Series 100 | KT(A)040 Series 100 | KT(A)052 Series 100 | KT(A)055 Series 100 |
|------|---|------------------------|------------------------|------------------------|------------------------|
| 1 | Access Panel | 9003900005 | 9003900005 | 9003900005 | 9003900005 |
| 2 | Heat Trap/Dip Tube Combo | 9009140005 | 9009141005 | 9009143005 | 9009127005 |
| 3 | Drain Valve | 9009085015 | 9009086015 | 9009086015 | 9009086015 |
| 4 | Lower Element | 9000095015 | 9000095015 | 9000095015 | 9000095015 |
| 5 | Element Gasket | 9000308005 | 9000308005 | 9000308005 | 9000308005 |
| 6 | Nipple w/Heat Traps | 9003936015 | 9003936015 | N/A | N/A |
| 7 | Hot Outlet w/Heat Trap* | N/A | N/A | 9009125005 | 9009125005 |
| 8 | Primary Anode Rod (6 yr Alum.) | 9003944005 | 9000029005 | 9000029005 | 9003892005 |
| 9 | T&P Relief Valve | 9001583015 | 9002403015 | 9002403015 | 9002403015 |
| 10 | Terminal Cover w/High Limit | 9002438015 | 9002438015 | 9002438015 | 9002438015 |
| 11 | Thermostat Bracket | 9003898215 | 9003898215 | 9003898215 | 9003898215 |
| 12 | Upper Thermostat w/High Limit | 9001954015 | 9001954015 | 9001954015 | 9001954015 |
| 13 | Upper Element | 9000095015 | 9000095015 | 9000095015 | 9000095015 |
| 14 | Terminal Cover | 9002276015 | 9002276015 | 9002276015 | 9002276015 |
| 15 | Lower Thermostat | 9000507015 | 9000507015 | 9000507015 | 9000507015 |
| 16 | Pipe Insulation | 9002445005 | 9002445005 | 9002445005 | 9002445005 |
| 17 | 20" Dia. Aluminum Drain Pan w/Side Drain | 9000714005 | 9000714005 | 9000714005 | 9000714005 |
| 17 | 22" Dia. Aluminum Drain Pan w/Side Drain | 9001609005 | 9001609005 | 9001609005 | 9001609005 |
| 17 | 24" Dia. Aluminum Drain Pan w/Side Drain | 9002769005 | 9002769005 | 9002769005 | 9002769005 |
| 17 | 28" Dia. Aluminum Drain Pan w/Side Drain | 9001608005 | 9001608005 | 9001608005 | 9001608005 |

* Hot Outlet w/Heat Trap not pictured.

| ELEMENT CHART | | | |
|---------------|------------|------------|------------|
| WATTAGE | 120v | 208v | 240v |
| 1500W-CPR | 9002963005 | 9003946115 | 9002864115 |
| 1500W-INC | 9004279115 | 9004283115 | 9004290115 |
| 1650W-CPR | 9002072005 | ----- | ----- |
| 1650W-INC | 9004753115 | ----- | ----- |
| 2000W-CPR | 9004741115 | 9003954115 | 9003946115 |
| 2000W-INC | 9004280005 | 9004284115 | 9004283115 |
| 2500W-CPR | 9002859115 | 9003948115 | 9003954115 |
| 2500W-INC | 9004281005 | 9004285005 | 9004291115 |
| 3000W-CPR | 9002862115 | 9003956115 | 9001879005 |
| 3000W-INC | 9004282005 | 9001619005 | 9000664015 |
| 3500W-CPR | ----- | 9000092015 | 9003948115 |
| 3500W-INC | ----- | 9001620005 | 9004292115 |
| 3800W-CPR | ----- | 9003957115 | 9003949005 |
| 3800W-INC | ----- | 9004293115 | 9001619005 |
| 4000W-CPR | ----- | 9003951115 | 9003956115 |
| 4000W-INC | ----- | 9004286005 | 9004751115 |
| 4500W-CPR | ----- | 9002645115 | 9000092015 |
| 4500W-INC | ----- | 9004287005 | 9001620005 |
| 5500W-CPR | ----- | 9002871005 | 9003951115 |
| 5500W-INC | ----- | 9004288005 | 9004286005 |
| 6000W-CPR | ----- | 9003953115 | 9003952115 |
| 6000W-INC | ----- | 9004289115 | 9004287005 |



Lochinvar LLC
300 Maddox Simpson Pkwy, Lebanon, TN 37090.
1-615-889-8900
www.lochinvar.com