



Explosion-Resistant Commercial Electric Water Heaters

Safety and Security in Models from 6 to 120 Gallons

Some applications require an extra measure of safety and dependability. Lochinvar's complete line of explosion resistant water heaters provides an extra measure of protection. Our explosion resistant elements employ a moisture tight, completely enclosed, thermostat and electrical contact enclosure. When safety is a primary consideration—choose a Lochinvar Explosion-Resistant electric water heater – and rest assured!

Standard Features

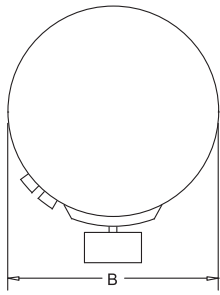
- **Energy Saving Design** - All models meet the latest NAECA and ASHRAE Energy Efficiency Standards.
- **Glass-Lined Steel Tank** - Our durable glass lining is fused to the tank at 1600°F to assure lasting protection against rust and corrosion while providing clean, clear hot water. 300 psi test pressure provides 150 psi working pressure.
- **Non-CFC Foam Insulation** - The polyurethane closed cell foam minimizes standby heat loss and maximizes heat retention.
- **High Quality Thermostats** - Adjustable, accurate control provides easy means of selecting most desired temperature.
- **Magnesium Tank Saver Anode** - Large diameter magnesium anode prolongs tank life and inhibits corrosion.
- **Cold Water Inlet Tube** - Withstands temperatures of 400°F.
- **ASME Temperature & Pressure Relief Valve** - Included with all models.
- **Warranty** - 3 year limited warranty. (See warranty for details)



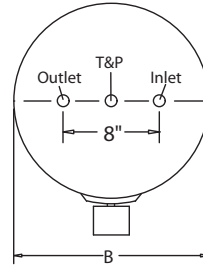
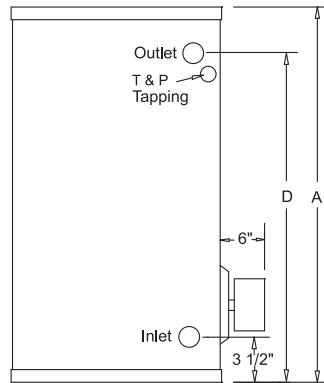
Explosion-Resistant Element

- **Thermostat Enclosure** - Moisture-tight and explosion resistant.
- **Large Terminal Enclosure** - For easy access, and simple installation.
- **Durable High Conductivity Elements** - Constructed with compacted MgO for maximum efficiency and long life.
- **Complies with NEC**
 - Class I (Groups C, D)
 - Class II (Groups E,F,G)
 - Class III
- **Complies with U.L. Standard 886**
- **Enclosure meets NEMA requirements** - For hazardous atmosphere (consult factory for specific applications).

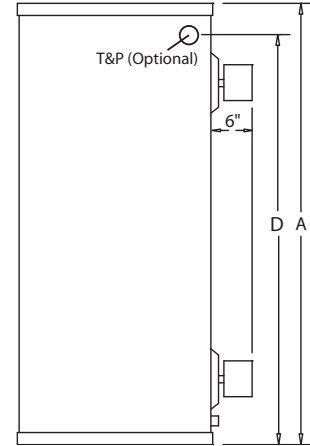
Dimensions and Specifications



Junior Models



Tall and Short Models

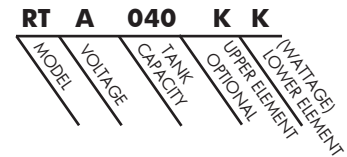


Note: Diagram above depicts optional double element availability. (Short and Tall models only).

Model Number	Gallon Capacity	A	B	D	Shipping Weight
Junior Models					
RJC006E	6	16-1/2"	14"	10-1/4"	43
RJC012E	12	27-3/4"	14"	21-1/4"	58
RJC020E	19	24-3/4"	18"	18-1/4"	69
Tall Models					
RTA030K	30	47"	18"	—	95
RTA040K	40	47"	20"	—	113
RTA052K-T	50	57-1/2"	20"	—	133
RTA052K	50	46-1/2"	22"	—	140
RTA066K	65	59-1/4"	22"	—	166
RTA082K	80	59"	24"	—	193
RTA120K	119	63-3/4"	28"	—	315
Short Models					
RSA030K	30	29-3/4"	22"	24"	106
RSA040K	40	31-3/4"	24"	24-1/4"	135
RSA050K	50	31-3/4"	26"	24-1/4"	163

*Notes: Water connections are 3/4" NPT on all models. (RTA120 is standard with 1" water connections)
Standard for Short and Tall models: 4500 watts, 240V 1ø.
Junior models: 1500 watts, 120V 1ø.*

**FOR EASE IN ORDERING
BY MODEL NUMBER**



This heater is a Tall model for 240 volt, has a 40 gallon capacity with 4500 watt upper element and 4500 watt lower element. Please note heating element and voltage schedules for all models.

VOLTAGE SCHEDULE
C – 120V 1ø
J – 208V 1ø
A – 240V 1ø
V – 480V 1ø

ELEMENT / WATTAGE SCHEDULE		Recovery Rate (GPH @ °F Rise)							
Element	Wattage	40	50	60	70	80	90	100	
E	1500	16	12	10	9	8	7	6	
K	4500	47	37	31	27	23	21	19	
P	6000	62	50	41	35	31	28	25	



Lochinvar Corporation • 300 Maddox Simpson Pkwy • Lebanon, TN 37090 • 615-889-8900 / Fax: 615-547-1000
www.Lochinvar.com