



Lochinvar[®]
High Efficiency Water Heaters, Boilers and Pool Heaters

**EXPLOSION-RESISTANT
WATER HEATER
Submittal Sheet**

CER-Sub-02

EXPLOSION-RESISTANT COMMERCIAL ELECTRIC WATER HEATERS

JOB NAME _____

LOCATION _____

ARCH./ENGR. _____

WHOLESALE _____

MECH. CONTRACTOR _____

MODEL NO. _____

RECOVERY RATE IN GPH _____ @ _____ ° **RISE**

GALLON CAPACITY _____

VOLTAGE/PHASE _____

kW _____

NOTES

Standard Features

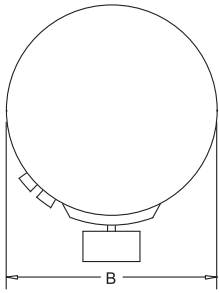
- Non-CFC Foam Insulation
- High Quality Thermostats
- Magnesium Tank Saver Anode
- Dip Tube
- 300 PSI Tested Tank, 150 psi Working Pressure
- Temperature & Pressure Relief Valve
- Glass-Lined Steel Tank
- Explosion-Resistant Heating Elements
- 3 Year Limited Tank Warranty
(See warranty for details)

Optional Equipment

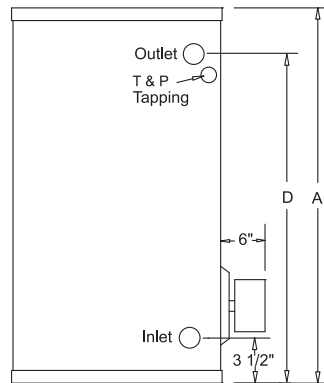
Place an X in the box by all options that apply

- Double Element Construction
- Six Way Mounting Shelf (6 & 12 Gallon Models)

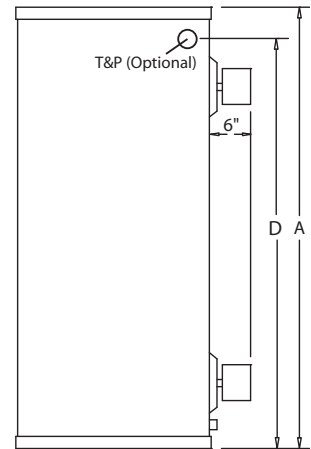
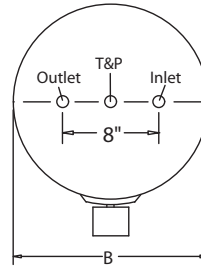
Explosion-Resistant Commercial Electric Water Heater Dimensions & Specifications



Junior Models



Tall and Short Models



Model Number	Gallon Capacity	A	B	D	Shipping Weight
Junior Models					
RJC006E	6	16-1/2"	14"	10-1/4"	43
RJC012E	12	27-3/4"	14"	21-1/4"	58
RJC020E	19	24-3/4"	18"	18-1/4"	69
Tall Models					
RTA030K	30	47"	18"	—	95
RTA040K	40	47"	20"	—	113
RTA052K-T	50	57-1/2"	20"	—	133
RTA052K	50	46-1/2"	22"	—	140
RTA066K	65	59-1/4"	22"	—	166
RTA082K	80	59"	24"	—	193
RTA120K	119	63-3/4"	28"	—	315
Short Models					
RSA030K	30	29-3/4"	22"	24"	106
RSA040K	40	31-3/4"	24"	24-1/4"	135
RSA050K	50	31-3/4"	26"	24-1/4"	163

Note: Diagram above depicts optional double element availability. (Short and Tall models only).

VOLTAGE SCHEDULE

- C – 120V 1 ϕ
- J – 208V 1 ϕ
- A – 240V 1 ϕ
- V – 480V 1 ϕ

ELEMENT/WATTAGE SCHEDULE

Element	Wattage	Recovery Rate (GPH @ °F Rise)							
		40	50	60	70	80	90	100	
E	1500	16	12	10	9	8	7	6	
K	4500	47	37	31	27	23	21	19	
P	6000	62	50	41	35	31	28	25	

*Notes: Water connections are 3/4" NPT on all models. (RTA120 is standard with 1" water connections)
Standard for Short and Tall models: 4500 watts, 240V 1 ϕ .
Junior models: 1500 watts, 120V 1 ϕ .*



Lochinvar Corporation • 300 Maddox Simpson Pkwy • Lebanon, TN 37090 • 615-889-8900 / Fax: 615-547-1000
www.Lochinvar.com