



Lochinvar[®]
High Efficiency Water Heaters, Boilers and Pool Heaters

COPPER-FIN²[®]
GAS HEATER
Submittal Sheet

CP-Sub-14

COPPER-FIN²[®] COMMERCIAL GAS HEATERS FOR POOL HEATING

JOB NAME _____

LOCATION _____

ENGINEER _____

WHOLESALE _____

MECH. CONTRACTOR _____

MODEL NO. _____

TYPE GAS _____

Btu/hr INPUT _____

Btu/hr OUTPUT _____

NOTES

STANDARD FEATURES _____

- › Up to 89% Thermal Efficiency
- › Proportional Firing up to 4:1 Turndown
 - › Hot Surface Ignition
 - › Low NOx Operation
 - › Sealed Combustion
 - › Low Gas Pressure Operation
- › Vertical & Horizontal Venting
 - › Category I Venting
 - › Double Wall "B" Vent Material
 - › Category IV Venting
 - › AL29-4C Stainless Steel Vent Material
- › ASME Copper Finned Tube Heat Exchanger
 - › ASME Certified, "HLW" Stamped
 - › Gasketless design
 - › 160 psi working pressure
- › On/Off Switch
- › Adjustable High Limit w/ Manual Reset
- › Combustible Floor Rated (0992-2072)
- › Flow Switch
- › All Bronze Pump
- › Low Air Pressure Switch
- › Inlet & Outlet Temperature Sensors
- › Easy Access Terminal Strips
- › Downstream Test Cocks
- › 150 psi ASME Temperature & Pressure Relief Valve
- › 1 Year Warranty on Parts (See Warranty for Details)
- › 5 Year Limited Warranty (See Warranty for Details)

SMART SYSTEM[™] FEATURES _____

- › SMART SYSTEM[™] Operating Control
 - › 2 Line/16 Character LCD Display
 - › Built in Cascading Sequencer for up to 8 heaters
 - › Password Security
 - › Low Water Flow Control & Indication
 - › Inlet & Outlet Temperature Readout
 - › Freeze Protection
 - › Service Reminder
 - › Time Clock
- › Data Logging
 - › Hours Running
 - › Ignition Attempts
 - › Last 10 Lockouts
- › Pump Control
 - › Pool Heater Pump
- › High Voltage Terminal Strip
 - › 120 VAC / 60 Hertz / 1 Phase Power Supply
 - › Pump Contacts with Pump Relay
- › Low Voltage Terminal Strip
 - › 24 VAC Auxiliary Device Relay Output - Louvers
 - › Auxiliary Proving Switch Contacts - Louvers
 - › Alarm on Any Failure Contacts
 - › Runtime Contacts
 - › Contacts for Air Louvers
 - › Contacts on Any Failure
 - › Unit Enable/Disable Contacts
 - › 0-10V Rate Contacts
 - › Pool Sensor Contacts
 - › Pool Supply Sensor Contacts
 - › Cascade Contacts

OPTIONAL EQUIPMENT _____

- › Alarm (includes
 - › High & Low Gas Pressure Switches w/ Manual Reset
- › Cupro-Nickel Heat Exchanger
- › Low Water Cut Off, Probe Type w/ Manual Reset & Test
- › Texas Pool Code (Outdoor Flow Switch and T&P Gauge)
- › Modbus Communications
- › Combustible Floor Kit (0502-0752)
- › Stack Frame

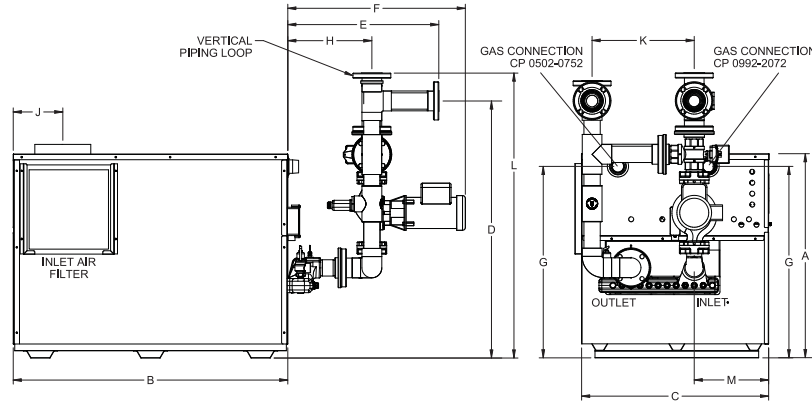
FIRING CODES _____

- › M7 Firing Code - California Code
- › M9 Firing Code - Hot surface ignition with Electronic Supervision

CERTIFICATIONS _____

- › ANSI Z21.10.3/CSA 4.3 certified
- › South Coast Air Quality Management District registered
- › Texas Commission on Environmental Quality

Copper-Fin²® Commercial Gas Heater Dimensions & Specifications



Model Number	Input MBH	Output MBH	A	B	C	D	E	F	G	H	J	K	L	M	Vent Size	Air Inlet	Gas Conn	Shipping Weight
CPN0502	500	445	31-1/2"	45-1/2"	22-1/4"	38"	20-1/4"	26-1/2"	29"	9-3/4"	7"	12-3/4"	41-1/4"	9"	6"	6"	1-1/4"	523
CPN0652	650	579	31-1/2"	56-3/4"	22-1/4"	38"	20-1/4"	26-1/2"	29"	9-3/4"	8-1/2"	12-3/4"	41-1/4"	9"	8"	8"	1-1/4"	665
CPN0752	750	668	31-1/2"	64"	22-1/4"	38"	20-1/4"	26-1/2"	29"	9-3/4"	8-1/2"	12-3/4"	41-1/4"	9"	8"	8"	1-1/4"	713
CPN0992	990	881	36"	48-1/4"	33-1/2"	48-1/4"	26-3/4"	30-1/4"	33-1/4"	13-3/4"	8-1/2"	18-1/4"	52"	13"	10"	10"	2"	864
CPN1262	1,260	1,121	36"	58-1/2"	33-1/2"	48-1/4"	26-3/4"	30-1/4"	33-1/4"	13-3/4"	10-1/2"	18-1/4"	52"	13"	12"	12"	2"	954
CPN1442	1,440	1,282	36"	68-3/4"	33-1/2"	48-1/4"	26-3/4"	30-1/4"	33-1/4"	13-3/4"	10-1/2"	18-1/4"	52"	13"	12"	12"	2"	1,042
CPN1802*	1,800	1,602	36"	82-1/4"	33-1/2"	48-1/4"	26-3/4"	30-1/4"	33-1/4"	13-3/4"	11"	18-1/4"	52"	13"	14"	12"	2"	1,233
CPN2072*	2,070	1,842	36"	92-1/2"	33-1/2"	48-1/4"	26-3/4"	30-1/4"	33-1/4"	13-3/4"	11"	18-1/4"	52"	13"	14"	12"	2"	1,285

Notes: Change 'N' to 'L' for LP gas models.

Water connections for models CP 0502-0752 are 2" flanged.

Performance data is based on manufacturer test results.

No deration on LP models.

Water connections for models CP 0992-2072 are 2-1/2" flanged

*Cupro-Nickel Heat Exchanger is standard on these models.

Venting Options

Aire-Lock Direct Vent Sealed Combustion

Conventional

DirectAire® Vertical

DirectAire® Vertical w/ Sidewall Inlet

Outdoor

Powered DirectAire® Horizontal

Powered Sidewall

Sidewall)



Lochinvar
High Efficiency Water Heaters, Boilers and Pool Heaters



Lochinvar, LLC • 300 Maddox Simpson Pkwy • Lebanon, TN 37090 • 615-889-8900 / Fax: 615-547-1000
www.Lochinvar.com