



**Lochinvar**<sup>®</sup>  
HIGH EFFICIENCY BOILERS & WATER HEATERS

**COPPER-FIN<sup>®</sup>**  
**WATER HEATER**  
**Submittal Sheet**

**CWA-Sub-03**

**COPPER-FIN<sup>®</sup> GAS WATER HEATER (MODELS CW 90 - 500)**

**JOB NAME** \_\_\_\_\_

**LOCATION** \_\_\_\_\_

**ARCH./ENGR.** \_\_\_\_\_

**WHOLESALE** \_\_\_\_\_

**MECH. CONTRACTOR** \_\_\_\_\_

**MODEL NO.** \_\_\_\_\_

**TYPE GAS** \_\_\_\_\_

**Btu/hr INPUT** \_\_\_\_\_

**RECOVERY RATE IN GPH** \_\_\_\_\_ **@** \_\_\_\_\_ **°F RISE**

**NOTES**

**Standard Features**

- 82% Thermal Efficiency
- Built-In Draft Diverter
- Stainless Steel Burners
- ASME Copper Finned Tube Heat Exchanger
- 160 psi Working Pressure
- Gasketless Heat Exchanger Design
- All Bronze Circulating Pump
- Pump Delay/Freeze Protection
- Remote Tank Thermostat
- Glass-Lined Water Surfaces
- Loch-Heat Ceramic Tile Combustion Chamber
- ASME Temperature & Pressure Relief Valve
- Manual Reset High Limit
- Terminal Strip
- Self Diagnostic Indicator Lights
- Automatic Reset High Limit
- 24 Volt Control System
- CSA Design Certified for Alcove Installation
- CSA Design Certified for Installation on Combustible Floors
- 3 Year Limited Warranty on Heat Exchanger

**Optional Equipment**

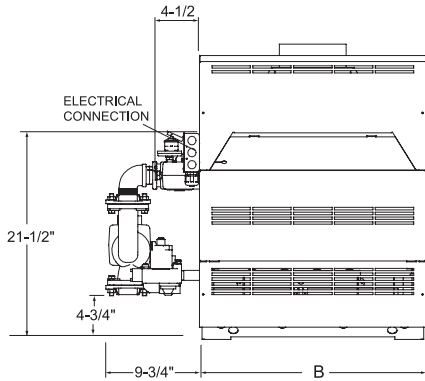
Place an X in the box by all options that apply

- Adjustable High Limit w/ Manual Reset
- Contacts on any Failure (CW 315-500)
- Contacts for Air Louvers (CW 315-500)
- Cupro-Nickel Heat Exchanger
- Flow Switch
- Low Water Cut-Off
- Stack Frame
- PVC Venting Kit (CW 90-135)

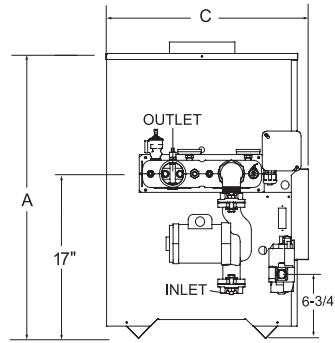
**Firing Controls**

- F1 - Standing Pilot (Standard CW 90-270)
- F9 - Intermittent Spark Ignition (Standard CW 315-500)
- F13 - GE GAP/FM/IRI
- F7 - California Code (CW 225-500)

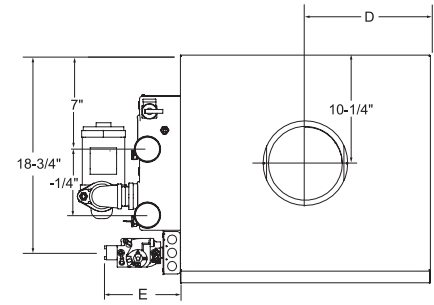
# Copper-Fin® Gas Water Heater Dimensions & Specifications



Front View



Side View



Top View

Model Number	Btu/Hr Input	GPH @ 100°F Rise	A	B	C	D	E	Vent Size	Gas Conn.	Shipping Weight
CWN090PM	90,000	89	29-1/2"	15-1/2"	21-1/2"	7-3/4"	6-1/4"	5"	1/2"	175
CWN135PM	135,000	134	29-1/2"	19-1/2"	21-1/2"	9-3/4"	6-1/4"	6"	1/2"	195
CWN180PM	180,000	179	29-1/2"	23-1/2"	21-1/2"	11-3/4"	7-1/4"	7"	3/4"	220
CWN199PM	199,999	198	29-1/2"	26-1/2"	21-1/2"	13-1/4"	7-1/4"	7"	3/4"	230
CWN225PM	225,000	224	29-1/2"	26-1/2"	21-1/2"	13-1/4"	7-1/4"	7"	3/4"	235
CWN270PM	270,000	268	29-1/2"	29 1/2"	21 1/2"	14 3/4"	7-1/4"	8"	3/4"	240
CWN315PM	315,000	313	29-1/2"	32-1/2"	21-1/2"	16-1/4"	6-1/4"	8"	3/4"	250
CWN360PM	360,000	358	29-1/2"	35-1/2"	21-1/2"	17-3/4"	8-1/4"	9"	1"	270
CWN399PM	399,999	397	29-1/2"	44-1/2"	22"	22-1/4"	5-1/2"	10"	1"	340
CWN500PM	500,000	497	34-1/2"	52-1/2"	22"	26-1/4"	9-1/2"	10"	1"	365

Notes: Change 'N' to 'L' to denote L.P. gas models

Inlet water connections are 1-1/2" NPT and outlet water connections are 2" NPT on 6-1/4" centers

Approved for indoor installation only

Performance data based on manufacturer test results

Electrical Requirements: 120 VAC / 2.5 AMP



Lochinvar, LLC  
 300 Maddox Simpson Parkway  
 Lebanon, Tennessee 37090  
 P: 615.889.8900 / F: 615.547.1000  
 Lochinvar.com

