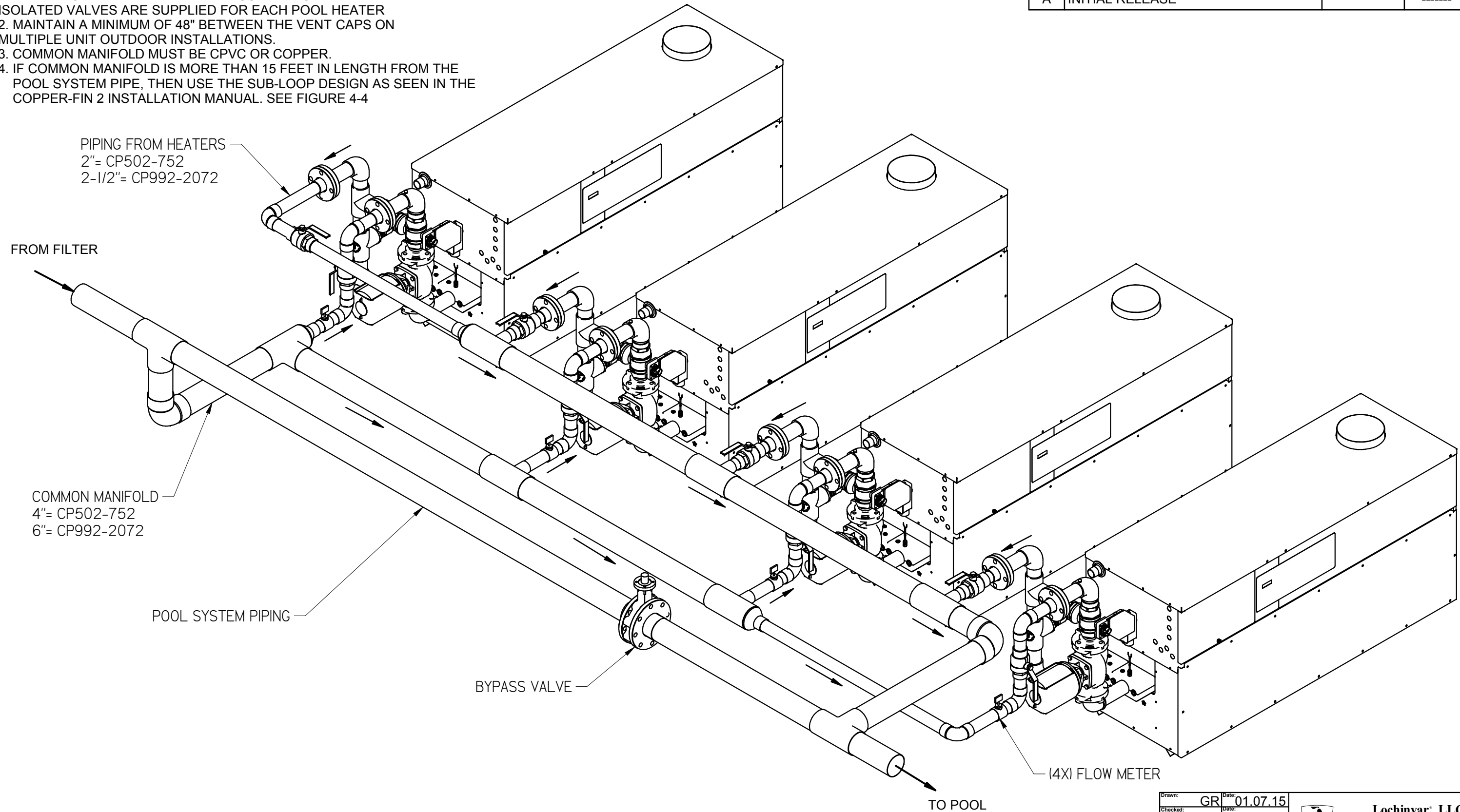


NOTES:

1. AN APPROPRIATE RELIEF VALVE MUST BE INSTALLED WHEN ISOLATED VALVES ARE SUPPLIED FOR EACH POOL HEATER
2. MAINTAIN A MINIMUM OF 48" BETWEEN THE VENT CAPS ON MULTIPLE UNIT OUTDOOR INSTALLATIONS.
3. COMMON MANIFOLD MUST BE CPVC OR COPPER.
4. IF COMMON MANIFOLD IS MORE THAN 15 FEET IN LENGTH FROM THE POOL SYSTEM PIPE, THEN USE THE SUB-LOOP DESIGN AS SEEN IN THE COPPER-FIN 2 INSTALLATION MANUAL. SEE FIGURE 4-4

REV	DESCRIPTION	ECO	DATE	APR
A	INITIAL RELEASE		-----	----



Drawn:	GR	Date:	01.07.15
Checked:		Date:	
Approved:		Date:	
UNLESS OTHERWISE SPECIFIED DIMENSIONS ARE IN INCHES			
TOLERANCES			
DECIMAL	ANGULAR		
.X ± .125		± 1"	
.XX ± .060			
.XXX ± .031			
DEBURR AND BREAK ALL SHARP EDGES TO .05 MAX			
Material:			

Lochinvar, LLC
 300 Maddox Simpson Parkway
 Lebanon, TN 37090
 TEL 615-889-8900 FAX 615-547-1000
 www.lochinvar.com
 High Efficiency Water Heaters, Boilers and Pool Heaters

Title		"CP" POOL HEATER
Dwg No.	SLS2010	REV
		A
SIZE	THIRD ANGLE PROJECTION	SHEET 1 OF 1
B		

DRAWINGS PROVIDED BY LOCHINVAR ARE FOR REFERENCE ONLY. THE DRAWINGS MAY NOT INCLUDE ALL OF THE COMPONENTS AND PIPING NECESSARY FOR EVERY APPLICATION. CONSULT THE PRODUCT SPECIFIC INSTALLATION AND OPERATION MANUAL FOR PROPER INSTRUCTION DETAILS BEFORE INSTALLING THIS PRODUCT. ALWAYS CONSULT LOCAL CODE REQUIREMENTS BEFORE INSTALLING THIS PRODUCT.

CONFIDENTIAL
 THIS DRAWING IS THE PROPERTY OF LOCHINVAR, LLC
 AND CAN NOT BE ALTERED, REPRODUCED OR DISTRIBUTED
 WITHOUT WRITTEN PERMISSION