

Standard Features

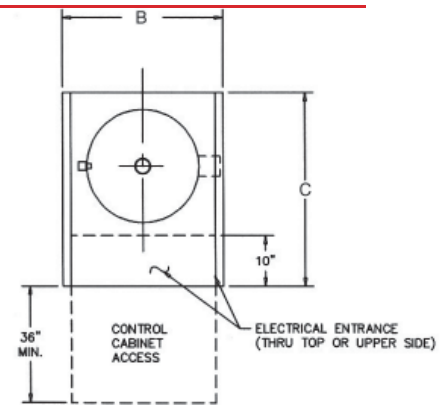
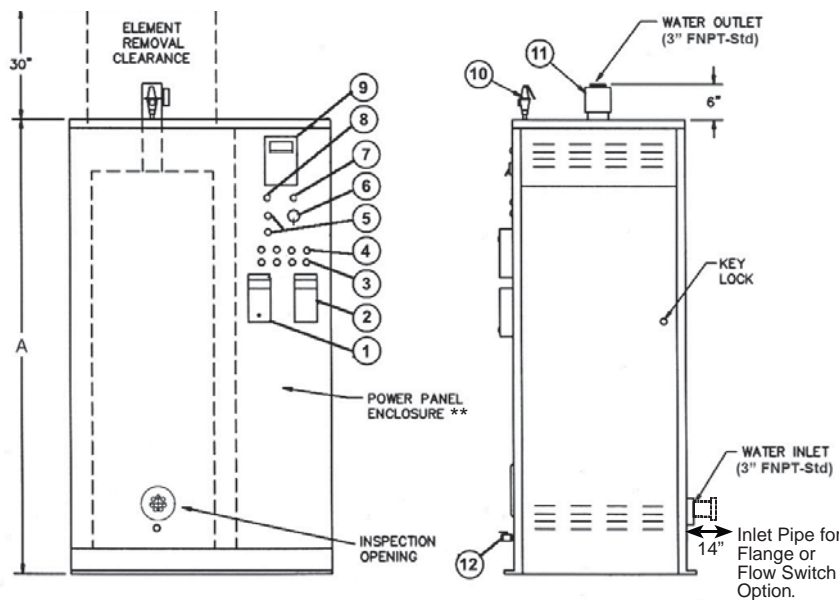
- ASME National Board Registered Pressure Vessel
- Heavy Duty Steel Boiler Vessel Housing
- 4" Fiberglass Insulation
- 3" NPT Inlet and Outlet Connection
- ASME Pressure Relief Valve
- Pressure Gauge with Cock
- Drain Valve
- Adjustable High Limit with Automatic Reset
- Adjustable High Limit with Manual Reset (units with more than 2 stages)
- Low Water Cut-Off
- Incoloy-Sheathed Elements
- Internal Branch Circuit Fusing
- Magnetic Contactors
- Main Supply Circuit Lugs
- 120 Volt Fused Control Transformer
- On/Off Switch with Pilot Light
- Manual Limit Toggle Switches (1 per step)
- Integral Electric Control Panel with key locked door
- Proportional Progressive Sequencing Step Control
- Status Pilot Light for each Step
- Electric Digital Temperature Readout (except 1 & 2 step models)
- Listed by the Underwriters Laboratories
- 3 Year Limited Tank Warranty / 1 Year Parts Warranty (See warranty for details)

Optional Equipment

- Alarm Buzzes with silencing switch
- Automatic Breaker
- Flow Switch
- ABB Fused Disconnect
- Non-Fused Disconnect
- Ground Fault Detectoin system
- Low Temperature Switch
- Kilowatt/Hour Meter
- Flanged Water Connections
- Amp Meter
- Volt Meter
- High Pressure limit switch
- Control Panel door solenoid interlock
- Low water cutoff-float type
- BMS alarm interface
- BMS remote set point control
- BMS remote step control (remote enable)
- BMS 120V interface to limit boiler power demand
- BMS 24V interface to limit boiler power demand
- Time clock
- 304 stainless steel vessel & non ferrous trim
- 3" connections
- 4" connections



Commercial Electric Compact Boiler Dimensions & Specifications



Components

1. Temperature Limit, Auto Reset
2. Temperature Limit, Manual Reset
3. Manual Limit Switches
4. Pilot Lights, Amber (Steps "On")
5. PB Switches (Low Water Cutoff "Test"/"Reset")
6. Toggle Switch (Control Power)
7. Pilot Light, Amber (Control Power "On")
8. Pilot Light, Red (Low Water)
9. Temperature Setpoint / Control / Readout
10. Safety Relief Valve
11. Temperature & Pressure Gauges
12. Drain Valve

Model Number	Max. Flow (gpm)	Connection Sizes (NPT)	Dia (In)	Vol (Gal)	Dimensions			Weight lbs.
					A	B	C	
BW*1-**C	230	3"	12"	22	52"	24"	30"	600
BW*2-**C	230	3"	16"	36	52"	28"	34"	800
BW*3-**C	230*	3"	20"	56	52"	32"	38"	1,100

*4"/300 GPM is Optional ** Power Panel will be taller or wider for ABB Disconnect option. Consult factory.

Commercial Electric Compact Boilers

Ratings & Circuit Configurations

Model Number	Rating MBH	kW	208 & 240 Volt				480 Volt				600 Volt			
			Elements		Number of:		Elements		Number of:		Elements		Number of:	
			Qty	kW	Circuits	Steps@ kW	Qty	kW	Circuits	Steps@ kW	Qty	kW	Circuits	Steps@ kW
BW*1-015C	51	15	1	15	1	1@15	1	15	1	1@15	N/A	N/A	N/A	N/A
BW*1-020C	68	20	N/A	N/A	N/A	N/A	1	20	1	1@20	N/A	N/A	N/A	N/A
BW*1-030C	102	30	2	15	2	1@30	2	15	1	1@30	N/A	N/A	N/A	N/A
BW*1-040C	136	40	N/A	N/A	N/A	N/A	2	20	1	1@40	N/A	N/A	N/A	N/A
BW*1-045C	154	45	3	15	3	1@15, 1@30	3	15	2	1@15, 1@30	N/A	N/A	N/A	N/A
BW*1-047C	160	46.8	N/A	N/A	N/A	N/A	N/A	N/A	N/A	N/A	2	23.4	1	1@46.8
BW*1-060C	205	60	4	15	4	2@30	4	15	2	2@30	N/A	N/A	N/A	N/A
BW*1-070C	240	70.2	N/A	N/A	N/A	N/A	N/A	N/A	N/A	N/A	3	23.4	2	1@23.4, 1@46.8
BW*1-075C	256	75	5	15	5	1@15, 2@30	5	15	3	1@45, 1@30	N/A	N/A	N/A	N/A
BW*1-080C	273	80	N/A	N/A	N/A	N/A	4	20	2	2@40	N/A	N/A	N/A	N/A
BW*1-090C	307	90	6	15	6	3@30	N/A	N/A	N/A	N/A	N/A	N/A	N/A	N/A
BW*1-094C	319	93.6	N/A	N/A	N/A	N/A	N/A	N/A	N/A	N/A	4	23.4	2	2@46.8
BW*1-100C	341	100	N/A	N/A	N/A	N/A	5	20	3	1@20, 2@40	N/A	N/A	N/A	N/A
BW*1-105C	358	105	7	15	7	1@15, 3@30	7	15	4	1@45, 2@30	N/A	N/A	N/A	N/A
BW*1-117C	399	117	N/A	N/A	N/A	N/A	N/A	N/A	N/A	N/A	5	23.4	3	1@70.2, 1@46.8
BW*1-120C	409	120	8	15	8	4@30	6	20	3	3@40	N/A	N/A	N/A	N/A
BW*2-135C	461	135	9	15	9	1@45, 3@30	9	15	5	1@45, 3@30	N/A	N/A	N/A	N/A
BW*1-140C	478	140	N/A	N/A	N/A	N/A	7	20	4	1@20, 3@40	6	23.4	3	3@46.8
BW*2-150C	512	150	10	15	10	5@30	10	15	5	5@30	N/A	N/A	N/A	N/A
BW*1-160C	546	160	N/A	N/A	N/A	N/A	8	20	4	4@40	N/A	N/A	N/A	N/A
BW*1-164C	559	163.8	N/A	N/A	N/A	N/A	N/A	N/A	N/A	N/A	7	23.4	4	1@70.2, 2@46.8
BW*2-165C	563	165	11	15	11	1@45, 4@30	11	15	6	1@45, 4@30	N/A	N/A	N/A	N/A
BW*2-180C	614	180	12	15	12	6@30	10	18	5	5@36	N/A	N/A	N/A	N/A
BW*1-187C	639	187.2	N/A	N/A	N/A	N/A	N/A	N/A	N/A	N/A	8	23.4	4	4@46.8
BW*2-200C	682	200	N/A	N/A	N/A	N/A	10	20	5	5@40	N/A	N/A	N/A	N/A
BW*3-210C	717	210	N/A	N/A	N/A	N/A	14	15	7	7@30	N/A	N/A	N/A	N/A
BW*2-211C	719	210.6	N/A	N/A	N/A	N/A	N/A	N/A	N/A	N/A	9	23.4	5	1@70.2, 3@46.8
BW*3-225C	768	225	N/A	N/A	N/A	N/A	15	15	8	1@45, 6@30	N/A	N/A	N/A	N/A
BW*2-234C	798	234	N/A	N/A	N/A	N/A	N/A	N/A	N/A	N/A	10	23.4	5	5@46.8
BW*2-240C	819	240	N/A	N/A	N/A	N/A	12	20	6	6@40	N/A	N/A	N/A	N/A
BW*2-257C	878	257.4	N/A	N/A	N/A	N/A	N/A	N/A	N/A	N/A	11	23.4	6	1@70.2, 4@46.8
BW*3-280C	955	280	N/A	N/A	N/A	N/A	14	20	7	7@40	N/A	N/A	N/A	N/A
BW*2-281C	985	280.8	N/A	N/A	N/A	N/A	N/A	N/A	N/A	N/A	12	23.4	6	6@46.8
BW*3-300C	1024	300	N/A	N/A	N/A	N/A	15	20	8	1@20, 7@40	N/A	N/A	N/A	N/A
BW*3-304C	1038	304.2	N/A	N/A	N/A	N/A	N/A	N/A	N/A	N/A	13	23.4	7	1@70.2, 5@46.8
BW*3-320C	1092	320	N/A	N/A	N/A	N/A	16	20	8	8@40	N/A	N/A	N/A	N/A
BW*3-330C	1126	330	N/A	N/A	N/A	N/A	22	15	11	5@30, 3@60	N/A	N/A	N/A	N/A
BW*3-351C	1198	351	N/A	N/A	N/A	N/A	N/A	N/A	N/A	N/A	15	23.4	8	1@70.2, 6@46.8
BW*3-360C	1228	360	N/A	N/A	N/A	N/A	20	18	10	6@36, 2@72	N/A	N/A	N/A	N/A
BW*3-398C	1357	397.8	N/A	N/A	N/A	N/A	N/A	N/A	N/A	N/A	17	23.4	9	1@70.2, 7@46.8
BW*3-400C	1365	400	N/A	N/A	N/A	N/A	20	20	10	6@40, 2@80	N/A	N/A	N/A	N/A
BW*3-421C	1437	421.2	N/A	N/A	N/A	N/A	N/A	N/A	N/A	N/A	18	23.4	9	2@70.2, 6@46.8
BW*3-440C	1501	440	N/A	N/A	N/A	N/A	22	20	11	5@40, 3@80	N/A	N/A	N/A	N/A
BW*3-445C	1517	444.6	N/A	N/A	N/A	N/A	N/A	N/A	N/A	N/A	19	23.4	10	3@70.2, 5@46.8
BW*3-468C	1597	468	N/A	N/A	N/A	N/A	N/A	N/A	N/A	N/A	20	23.4	10	4@70.2, 4@46.8
BW*3-491C	1677	491.4	N/A	N/A	N/A	N/A	N/A	N/A	N/A	N/A	21	23.4	11	5@70.2, 3@46.8

Notes: # = Oversize control cabinets are supplied for these models at 208 & 240 volts.

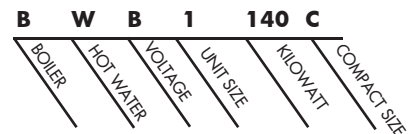
Operating temperature and pressure are requested prior to placing an order.

VOLTAGE SCHEDULE

B - 240V	3PH
K - 208V	3PH
X - 480V	3PH
N - 600V	3PH

Consult Factory for single phase

FOR EASE IN ORDERING BY MODEL NUMBER



This is a 240 volt, three phase, 140 Kilowatt compact size electric hot water boiler.



Lochinvar, LLC
300 Maddox Simpson Parkway
Lebanon, Tennessee 37090
P: 615.889.8900 / F: 615.547.1000
Lochinvar.com

