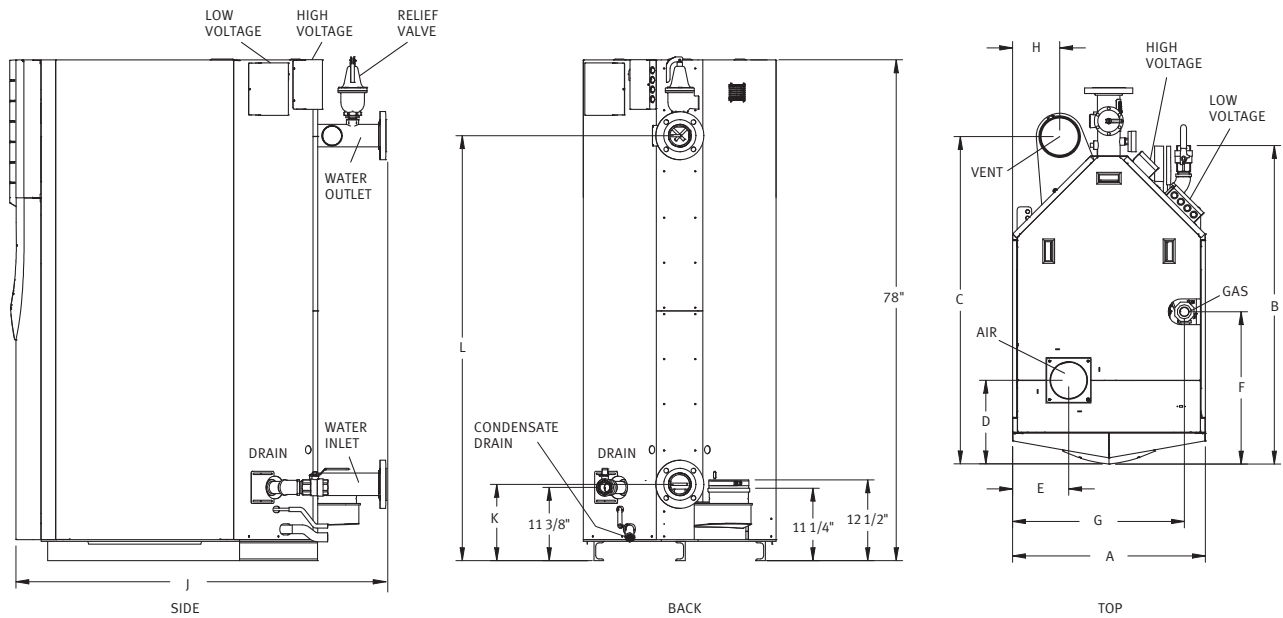


CREST COMMERCIAL CONDENSING BOILER

JOB NAME _____
LOCATION _____
ENGINEER _____
WHOLESALER _____
CONTRACTOR _____
MODEL NO. _____
TYPE GAS _____
EQUIPMENT TAG _____
NOTES



Model Number	Input MBH		AHRI Thermal %	Output MBH	Net AHRI Rating MBH	Turndown	A	B	C	D	E	F	G	H	J	K	L	Water Gas Conn.	Inlet / Air Intake	Vent Size	Oper. Weight	Ship. Weight	
	Min	Max																					
FB*0751	50	750	96.2%	722	627	15:1	30"	49-1/2"	51"	13"	8-3/4"	23-3/4"	26-3/4"	7-3/8"	57-5/8"	11-7/8"	66-1/8"	1-1/4"	3"	6"	6"	1,768	1,560
FB*1001	50	1,000	96.2%	962	837	20:1	30"	49-1/2"	51"	13"	8-3/4"	23-1/8"	26-3/4"	6-1/2"	57-5/8"	11-7/8"	66-1/8"	1-1/4"	3"	6"	6"	1,838	1,596
FB*1251	63	1,250	96.2%	1,203	1,046	20:1	30"	49-1/2"	51-3/8"	13"	8-3/4"	21-5/8"	26-3/4"	6-1/2"	57-3/4"	11-7/8"	66-1/8"	1-1/4"	3"	6"	8"	1,975	1,648
FB*1501	60	1,500	96.2%	1,443	1,255	25:1	30"	59-1/4"	62-3/8"	15-7/8"	9"	27-7/8"	26-7/8"	5-1/8"	68"	12-3/8"	65-3/8"	1-1/2"	4"	8"	8"	2,307	1,961
FB*1751	70	1,750	96.2%	1,684	1,464	25:1	30"	58-3/4"	61-1/2"	15-7/8"	9"	27-1/8"	27"	5-1/8"	68"	12-3/8"	65-3/8"	1-1/2"	4"	8"	8"	2,458	2,017
FB*2001	80	1,999	96.2%	1,924	1,673	25:1	30"	58-3/4"	61-1/2"	15-7/8"	9"	26-3/4"	27"	5-1/8"	68"	12-3/8"	65-3/8"	1-1/2"	4"	8"	8"	2,570	2,087

Note: *Insert "N" for natural gas, "L" for LP gas models and "D" for dual fuel. Indoor installation only. *Information subject to change without notice

CREST[®]

CONDENSING BOILER

CODES & REGISTRATIONS

ANSI Z21.13/CSA Certified
ASME Certified, "H" Stamp / National Board
California Code Compliant
CSD1 / Factory Mutual / GE Gap Compliant
AHRI Certified



SMART TOUCH[™] FEATURES

CON-X-US[®] Remote Connect

SMART TOUCH Touchscreen Operating Control

Full-Color 8" Touchscreen LCD Display

Built-in Cascading Sequencer for up to 8 Boilers with Built-in Redundancy

- Cascade Multiple Sized Boilers
- Lead/Lag Cascade
- Efficiency Optimized Cascade

Front-End Loading Capability with Copper-Fin II[®] and Power-Fin[®] Boilers

Building Management System Integration with 0-10 VDC Input

BACnet MSTP Communications

Modbus Communications

Outdoor Reset Control with Outdoor Air Sensor

Password Security

Domestic Hot Water Prioritization

- DHW tank piped with priority in the boiler loop
- DHW tank piped as a zone in the system with the pumps controlled by the Smart System
- DHW Modulation Limiting
- Separately Adjustable SH/DHW Switching Times

Low Water Flow Safety Control & Indication

Inlet & Outlet Temperature Readout

Freeze Protection

Service Reminder

Time Clock

Data Logging

- Hours Running, Space Heating
- Hours Running, Domestic Hot Water
- Hours Running, Modulation Rate
- Ignition Attempts
- Last 10 Lockouts

Programmable System Efficiency Optimizers

- Night Setback
- Anti-Cycling
- Outdoor Air Reset Curve
- Ramp Delay
- Boost Temperature & Time
- Modulation Factor Control

Three Pump Control

- System Pump
- Boiler Pump
- Domestic Hot Water Pump

High-Voltage Terminal Strip

- 120 VAC / 60 Hertz / 1 Phase Power Supply
- System Pump, Boiler Pump and DHW Pump

Power

Low-Voltage Terminal Strip

- 24 VAC Auxiliary Device Relay
- Auxiliary Proving Switch Contacts
- Alarm on Any Failure Contacts
- Runtime Contacts
- DHW Thermostat Contacts
- Unit Enable/Disable Contacts
- System Sensor Contacts
- DHW Tank Sensor Contacts
- Outdoor Air Sensor Contacts
- Cascade Contacts
- 0-10 VDC BMS External Control Contact
- 0-10 VDC Variable Speed Boiler Pump Control

Contact

STANDARD FEATURES

96.2% Thermal Efficiency (AHRI)
Up to 99% Thermal Efficiency in Low-Temp. Applications
Modulating Burner with up to 25:1 Turndown
Direct-Spark Ignition
Low-NOx Operation
Sealed Combustion
Air Inlet Filter w/Replacement Reminder
Low Gas Pressure Operation
Vertical and Horizontal Direct Venting
> Direct Vent up to 100 Feet
> PVC, CPVC, Polypropylene or AL29-4C
ASME "H" Stamped Heat Exchanger
316L Stainless Steel Fire Tubes
160 psi Working Pressure
On/Off Switch
Adjustable High Limit with Manual Reset
Low Water Cutoff with Manual Reset & Test
High & Low Gas Pressure Switches w/Manual Reset
Low Air Pressure Switches

Condensate Trap w/Blocked Drain Switch

Drain Valve

System Sensor

Outdoor Air Sensor

Inlet & Outlet Temperature Sensors

High-Voltage Terminal Strip

Low-Voltage Terminal Strip

Downstream Gas Test Cocks

50 psi ASME Relief Valve

Temperature & Pressure Gauge

Zero Clearances to Combustible Materials

10-Year Limited Warranty (See Warranty for Details)

1-Year Warranty on Parts (See Warranty for Details)

OPTIONAL EQUIPMENT

- Wireless Outdoor Temperature Sensor
- Alarm Bell
- BMS Gateway - BACnet IP or LonWorks
- Condensate Neutralization Kit
- SMART TOUCH PC Software
- Common Vent Kits
- Dual Fuel Gas Train
- 75 psi ASME Relief Valve
- 100 psi ASME Relief Valve
- 125 psi ASME Relief Valve
- 150 psi ASME Relief Valve
- Motorized Isolation Valve
- Variable Speed Boiler Pump

Electrical Options (Shipped Loose):

- 208V/3Ø/60Hz
- 480V/3Ø/60Hz
- 600V/3Ø/60Hz

VENTING OPTIONS

- Direct Vent Vertical
- Direct Vent Horizontal
- Vertical Vent with Sidewall Air Intake
- Sidewall Vent with Rooftop Air Intake
- Vertical Vent with Optional Room Air
- Sidewall Vent with Optional Room Air
- Common Vent



Lochinvar, LLC
300 Maddox Simpson Parkway
Lebanon, Tennessee 37090
P: 615.889.8900 | F: 615.547.1000
Lochinvar.com

