



Lochinvar[®]
HIGH EFFICIENCY BOILERS & WATER HEATERS

**OUTDOOR ARMOR
Condensing Water Heater
Submittal Sheet**

OAW-Sub-01b

OUTDOOR ARMOR™ CONDENSING WATER HEATER

JOB NAME _____
LOCATION _____
ENGINEER _____
WHOLESALE _____
MECH. CONTRACTOR _____
MODEL NO. _____
TYPE GAS _____
Btu/hr INPUT _____
RECOVERY RATE IN GPH _____ @ _____ °F RISE
NOTES

OUTDOOR STANDARD FEATURES

- › AHRI Certified 96% Thermal Efficiency
- › Modulating Burner with 5:1 Turndown
 - › Direct-Spark Ignition
 - › Low NOx Operation
 - › Sealed Combustion
 - › Low Gas Pressure Operation
- › Stainless Steel Heat Exchanger
 - › All Welded Construction, Gasketless Design
 - › 160 psi Working Pressure
 - › ASME Construction (286-801)
- › Outdoor Rated Vent System
 - › UV Resistant Polypropylene (151-601)
 - › Stainless Steel (701-801)
- › Natural to L.P. Conversion Kit
- › All Bronze Circulating Pump and Pump Cover
- › On/Off Switch
- › Flow Switch
- › ASME Temperature & Pressure Relief Valve (286-801)
- › Temperature & Pressure Gauge (501-801)
- › Downstream Test Valves (501-801)
- › Adjustable Leveling Legs
- › Tank Sensor
- › Adjustable High Limit w/ Manual Reset
- › Automatic Reset High Limit
- › Condensate Trap
- › Zero Clearances to Combustible Material
- › 5 Year Limited Warranty (See Warranty for Details)
- › 1 Year Parts Warranty (See Warranty for Details)

SMART SYSTEM FEATURES

- › SMART SYSTEM Digital Operating Control
- › Multi Color Graphic LCD Display
- › Built in Cascading Sequencer for up to 8 Water Heaters
 - › Lead Lag
 - › Efficiency Optimization
 - › Front-End Loading Capability with CopperFin II
- › Building Management System Integration
 - › Modbus Communication (Optional)
 - › 0-10 VDC Input to Control Modulation or Set point
 - › 0-10 VDC Modulation Rate Output
 - › 0-10 VDC Input to Enable/Disable call for heat
- › Access to BMS Settings Through Graphic LCD Display
- › Low Water Flow Safety Control & Indication
- › Inlet & Outlet Temperature Sensors & Readout
- › Flue Temperature Sensor
- › Water Heater Pump Control
- › Pump Delay with Freeze Protection
- › Pump Exercise
- › Night Setback
- › Building Recirculation loop Pump Control*
 - › Night Setback of Building Recirculation Loop*
- › Time Clock
- › Maintenance Reminder
 - › Ability to program name and number into the product as contact
- › High Voltage Terminal Strip
 - › 120 VAC / 60 Hertz / 1 Phase Power Supply
 - › Pump Control Contacts
 - › Water Heater Pump Control Contacts
 - › Building Recirculation Pump Control Contacts
- › Low Voltage Terminal Strip
 - › 24 VAC Auxiliary Device Relay
 - › Auxiliary Proving Switch Contacts
 - › Flow Switch Contacts
 - › Alarm on Any Failure Contacts
 - › Runtime Contacts
 - › Tank Sensor Contacts
 - › Cascade Contacts
 - › 0-10 VDC BMS External Control Contact
 - › 0-10 VDC Boiler Rate Output Contacts

OPTIONAL EQUIPMENT

- › Alarm Bell
- › Condensate Neutralization Kit
- › High & Low Gas Pressure Switches (501-801)
- › Modbus Communications
- › BMS Gateway to LON or BacNet
- › SMART SYSTEM PC Software
- › Freeze Protection Kit (Condensate Trap)

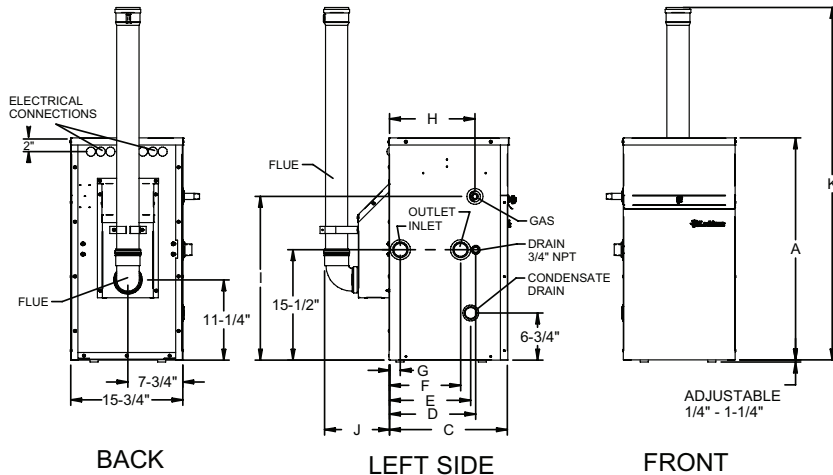
FIRING CONTROL SYSTEMS

- › M9 Standard Construction

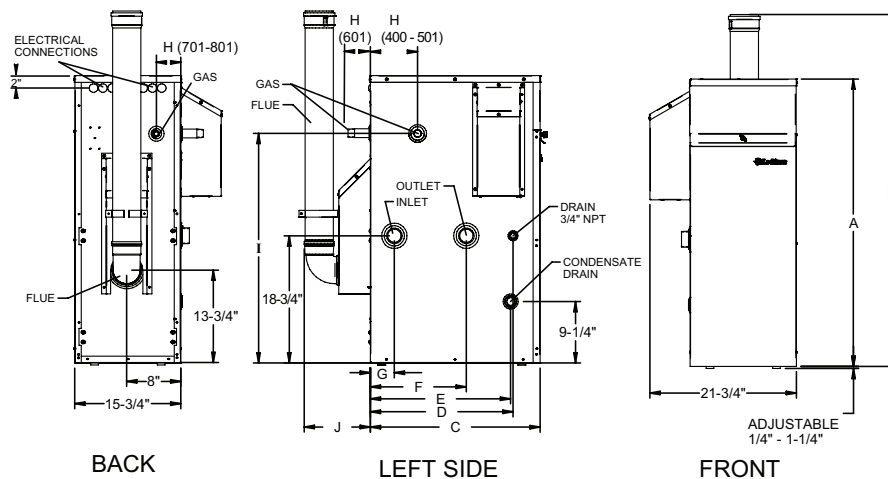
*Exclusive to Lochinvar

Outdoor ARMOR Condensing Water Heater Dimensions & Specifications

Models:
OAN 151-286



Models:
OAN 400-801



OUTDOOR ARMOR WATER HEATER			DIMENSIONS AND SPECIFICATIONS													
Model Number	Btu/Hr. Input	GPH @ 100° Rise	A	C	D	E	F	G	H	I	J	K	Gas Conn.	Water Conn.	Vent Size	Shipping Wt. (lbs.)
OAN151PM	150,000	175	31-1/4"	16-3/4"	12"	11-1/2"	10"	1-3/4"	12"	23"	9"	49-1/2"	1/2"	1-1/4"	3"	165
OAN200PM	199,999	232	31-1/4"	20-1/4"	16-1/2"	15-3/4"	14-1/2"	5-1/4"	16-1/2"	23"	9-1/4"	49-3/4"	1/2"	1-1/4"	3"	181
OAN286PM	285,000	332	42-1/2"	17-3/4"	13-1/4"	13-1/2"	6-1/4"	2-1/2"	14"	35-3/4"	9-1/4"	52"	3/4"	2"	4"	236
OAN400PM	399,999	464	42-1/2"	25-1/4"	21"	20-3/4"	14-1/4"	3-1/2"	7"	34"	9-3/4"	52"	1"	2"	4"	292
OAN501PM	500,000	582	42-1/2"	31-1/2"	21-1/4"	25"	14-1/4"	3-3/4"	3-1/2"	35-1/4"	9-3/4"	52-3/4"	1"	2"	4"	333
OAN601PM	600,000	698	42-1/2"	35"	21"	25"	14-1/4"	3-1/2"	4-1/2"	32-3/4"	9-1/2"	52"	1"	2"	4"	380
OAN701PM	700,000	815	42-1/2"	41-1/4"	23-1/4"	29-1/4"	17-1/4"	3-1/2"	3"	32-3/4"	12"	49-1/2"	1"	2"	6"	461
OAN801PM	800,000	931	42-1/2"	43-1/4"	23-1/4"	33-1/2"	17-1/4"	3-1/2"	3-1/4"	33"	12-1/4"	50-1/2"	1"	2"	6"	527

Notes: Outdoor installation only. All information subject to change. Change "N" to "L" for LP gas models.



Lochinvar, LLC
300 Maddox Simpson Parkway
Lebanon, Tennessee 37090
P: 615.889.8900 / F: 615.547.1000
Lochinvar.com

