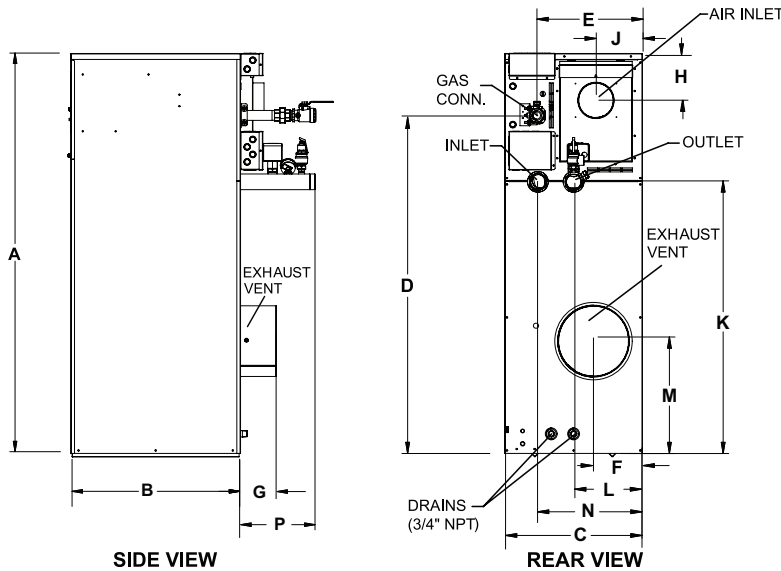



POWER-FIN[®] GAS BOILER 502, 752, 1002, 1302, 1501, 1701 & 2001 MODELS

JOB NAME _____
LOCATION _____
ENGINEER _____
WHOLESALER _____
CONTRACTOR _____
MODEL NO. _____
TYPE GAS _____
EQUIPMENT TAG _____
NOTES _____

Power-Fin Boiler Dimensions & Specifications



| POWER-FIN BOILER  | | | | | | | | DIMENSIONS AND SPECIFICATION | | | | | | | |
|--|-----------|----------------------------|------------|---------------------|------------------------|------------|---------------------|------------------------------|---------|---------|---------|-----------|---------|---------|----|
| Model Number | Input MBH | (B)/(F) Thermal Efficiency | Output MBH | Net AHRI Rating MBH | (M) Thermal Efficiency | Output MBH | Net AHRI Rating MBH | A | B | C | D | (B)/(F) E | (M) E | F | G |
| PBN0502 | 500 | 85.0% | 425 | 370 | 85.0% | 425 | 370 | 44-1/2" | 28-1/2" | 23-1/4" | 34" | 18-3/4" | 18-1/2" | 6-1/2" | 6" |
| PBN0752 | 750 | 85.0% | 638 | 554 | 85.0% | 638 | 554 | 52" | 28-1/2" | 23-1/4" | 41-3/4" | 19" | 18-3/4" | 6-3/4" | 6" |
| PBN1002 | 999 | 85.0% | 850 | 739 | 85.0% | 850 | 739 | 59-1/4" | 28-1/2" | 23-1/4" | 48-3/4" | 17" | 18-3/4" | 7-1/4" | 6" |
| PBN1302 | 1,300 | 85.0% | 1,105 | 961 | 85.0% | 1,105 | 961 | 67-3/4" | 28-1/2" | 23-1/4" | 57-1/4" | 17" | 18-3/4" | 8-1/4" | 6" |
| PBN1501 | 1,500 | 84.0% | 1,260 | 1,096 | 85.0% | 1,275 | 1,109 | 65-1/2" | 29-3/4" | 27-1/4" | 59" | 21" | 20-3/4" | 13-1/2" | 8" |
| PBN1701 | 1,700 | 84.0% | 1,428 | 1,242 | 85.0% | 1,445 | 1,257 | 70" | 29-3/4" | 27-1/4" | 63-1/2" | 21" | 20-3/4" | 13-1/2" | 8" |
| PBN2001 | 2,000 | 84.0% | 1,680 | 1,461 | 85.0% | 1,700 | 1,478 | 76-3/4" | 29-3/4" | 27-1/4" | 70" | 21" | 20-3/4" | 13-1/2" | 8" |

| Model Number | H | J | K | L | M | N | (B)/(F) P | (M) P | Gas Conn. | Air Inlet | (B)/(F) Cat I | (M)* Cat II | (M) Cat IV | Shipping Wt. (lbs) |
|--------------|-----|--------|---------|---------|---------|---------|-----------|---------|-----------|-----------|---------------|-------------|------------|--------------------|
| PBN0502 | 8" | 7-3/4" | 23" | 11-1/2" | 11-1/4" | 17-1/2" | 15-1/4" | 15-1/4" | 1" | 5" | 7" | 7" | 4" | 505 |
| PBN0752 | 8" | 7-3/4" | 30-1/2" | 11-1/2" | 11-1/4" | 17-1/2" | 15-1/4" | 15-1/4" | 1-1/4" | 5" | 9" | 9" | 5" | 554 |
| PBN1002 | 8" | 7-3/4" | 37-3/4" | 11-1/2" | 11-1/4" | 17-1/2" | 15-1/4" | 15-1/4" | 1-1/4" | 6" | 10" | 10" | 6" | 603 |
| PBN1302 | 8" | 7-3/4" | 46-1/4" | 11-1/2" | 19-1/2" | 17-1/2" | 15-1/4" | 15-1/4" | 1-1/4" | 6" | 12" | 12" | 8" | 652 |
| PBN1501 | 10" | 9-1/2" | 43-1/2" | 5-3/4" | 22-1/4" | 21-1/2" | 24-1/2" | 19-1/2" | 1-1/2" | 6" | 12" | 8" | 6" | 1,065 |
| PBN1701 | 10" | 9-1/2" | 48" | 5-3/4" | 25" | 21-1/2" | 24-1/2" | 19-1/2" | 1-1/2" | 7" | 14" | 9" | 7" | 1,100 |
| PBN2001 | 10" | 9-1/2" | 54-3/4" | 5-3/4" | 27-1/2" | 21-1/2" | 24-1/2" | 19-1/2" | 1-1/2" | 8" | 14" | 10" | 8" | 1,127 |

Notes: Change 'N' to 'L' for LP Gas Model. No deration on LP models. All water connections are 2-1/2" *w/CAT II conversion kit

POWER-fin®

CODES & REGISTRATIONS

ANSI Z21.13/CSA Certified
ASME Certified, "H" Stamp / National Board
California Code Compliant
SCAQMD Certified
CSD1 / Factory Mutual / GE Gap Compliant
Canadian Registration Number (CRN)
AHRI Certified



STANDARD FEATURES

- ▶ **85% Thermal Efficiency**
- ▶ **Outdoor Ready**
- ▶ **Modulating Burner with 5:1 Turndown**
 - Hot Surface Ignition
 - Low NOx Operation
 - Sealed Combustion
 - Low Gas Pressure Operation
- ▶ **Vertical & Horizontal Venting**
 - Venting up to 50 Feet
 - Category I or Category IV Venting
 - Cat IV converts to Cat II w/optional vent kit
- ▶ **ASME Copper-Finned Tube Heat Exchanger**
 - ASME Certified, "H" Stamped
 - Gasketless design
 - 160 psi working pressure
- ▶ **On/Off Switch**
- ▶ **Adjustable High Limit w/ Manual Reset**
- ▶ **Flow Switch**
- ▶ **Low Air Pressure Switch**
- ▶ **Downstream Test Cocks**
- ▶ **50 psi ASME Relief Valve**
- ▶ **Combustion Air Filtration**
- ▶ **Temperature & Pressure Gauge**
- ▶ **Zero Clearances to Combustible Material**
- ▶ **1 Year Warranty on Parts**
- ▶ **10 Year Limited Warranty**
(See Warranties for Details)

SMART TOUCH™ FEATURES

- ▶ **SMART TOUCH Operating Control**
 - Full-Color 8" Touchscreen LCD Display
 - CON-X-US Remote Connect
 - Front-End Loading Capability with Crest Boilers
 - Building Management System Integration with 0-10 VDC Input
 - Outdoor Reset Control
 - Dual Level Password Security
 - Inlet & Outlet Temperature Readout
 - Freeze Protection
 - Service Reminder
 - Time Clock
- ▶ **Built-in Cascading Sequencer for up to 8 Boilers**
 - Built-in Redundancy
 - Cascade Multiple Sized Boilers
 - Lead/Lag Cascade
 - Efficiency Optimized Cascade

- ▶ **Domestic Hot Water Prioritization**
 - DHW tank piped with priority in the boiler loop
 - DHW tank piped as a zone in the system with the pumps controlled by the Smart System
 - DHW Modulation Limiting
 - Separately Adjustable SH/DHW Switching Times
- ▶ **Low Water Flow Safety Control & Indication**
- ▶ **Data Logging**
 - Hours Running, Space Heating
 - Hours Running, Domestic Hot Water
 - Hours Running, Modulation Rate
 - Ignition Attempts
 - Last 10 Lockouts
- ▶ **Programmable System Efficiency Optimizers**
 - Night Setback
 - Anti-Cycling
 - Outdoor Air Reset Curve
 - Ramp Delay
 - Boost Temperature & Time
 - Modulation Factor Control
- ▶ **Three Pump Control Contacts**
 - System Pump
 - Boiler Pump
 - Domestic Hot Water Pump
- ▶ **High-Voltage Terminal Strip**
 - 120V/60 Hertz/1 Phase Power Supply
- ▶ **Low-Voltage Terminal Strip**
 - 24 VAC Auxiliary Device Relay
 - Auxiliary Proving Switch Contacts
 - Alarm on Any Failure Contacts
 - Runtime Contacts
 - DHW Thermostat Contacts
 - Unit Enable Contacts
 - Louver Proving Contacts
 - System Sensor Contacts
 - DHW Tank Sensor Contacts
 - Outdoor Air Sensor Contacts
 - Cascade Contacts
 - 0-10 VDC BMS External Control Contact
 - 3 Way Valve Contacts

FIRING CODES

M Indicates 5:1 Turndown, Category IV
B Indicates 2:1 Turndown, Category I
F Indicates 100% On/Off Fire, Category I

M9 Standard
B9 or F9 Special Order Factory Trimmed

OPTIONAL EQUIPMENT

Cupro-Nickel Heat Exchanger
High and Low Gas Pressure Switches

- w/Manual Reset (required for CSD-1/FM/GE Gap)

Low Temperature Valve
Motorized Mixing Valve
Outdoor Kit
Low Water Cutoff

- w/ Manual Reset & Test (required for California Code)

Alarm Bell
Modbus Communications
BACnet MSTP Communications
BMS Gateway to LON or BacNet IP
Wireless Outdoor Sensor
Vent Kit

- Horizontal Exhaust Cap
- Horizontal Air Intake Cap
- Horizontal Direct Vent Cap
- Category IV to Category II Conversion Kit



Lochinvar, LLC
300 Maddox Simpson Parkway
Lebanon, Tennessee 37090
P: 615.889.8900 | F: 615.547.1000
Lochinvar.com

