



Lochinvar®

HIGH EFFICIENCY BOILERS & WATER HEATERS

POWER-FIN COMMERCIAL BOILER

Submittal Sheet

PBXT-Sub-02

POWER-FIN® GAS BOILERS, MODELS PB 2500 – PB 5000

Job Name: _____ Model No. _____

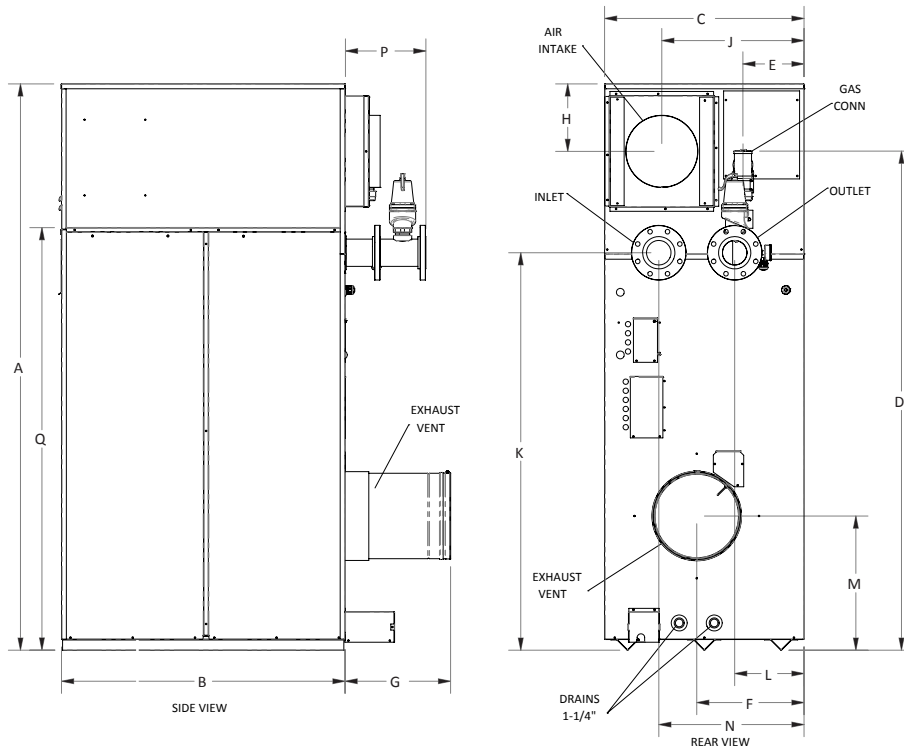
Location: _____ Type Gas: _____

Engineer: _____ Equipment Tag(s): _____

Wholesaler: _____

Contractor: _____

NOTES:



Model Number Guide

PB	N	2500	M9
Model	Natural Gas	Btu/hr Input	Firing Controls

Power-Fin Boiler,
Natural Gas,
2,500,000 Btu/hr input,
M9 firing controls

Power-Fin Boiler						Dimensions and Specifications					
Model No.	Input MBH	AHRI Thermal %	Combustion Efficiency	Gross Output MBH	Net AHRI Rating MBH	A	B	C	D	E	F
PBN2500	2,500	87.0%	87.0%	2,175	1,891	59"	44-1/2"	29-3/4"	49-3/4"	4"	15"
PBN3000	3,000	87.0%	87.0%	2,610	2,270	65"	44-1/2"	29-3/4"	55-3/4"	4"	15"
PBN3500	3,500	87.0%	87.0%	3,045	2,648	70-1/4"	47-1/4"	29-3/4"	62-1/2"	8-1/4"	15"
PBN4000	4,000	87.0%	87.0%	3,480	3,026	79-3/4"	47-1/4"	29-3/4"	68-3/4"	8-1/4"	15"
PBN5000	5,000	87.0%	87.0%	4,350	3,783	93-1/4"	46-3/4"	32-3/4"	82-1/4"	10"	17-3/4"

Model No.	G	H	J	K	L	M	N	P	Q	Gas Conn.	Air Inlet	Vent Outlet	Ship Wt.
PBN2500	16"	9"	20-1/4"	37"	8-3/4"	23"	21-1/4"	12"	N/A	2"	9"	9"	1470
PBN3000	16-1/4"	9"	20-1/4"	43"	8-3/4"	23"	21-1/4"	12"	N/A	2"	9"	10"	1550
PBN3500	16-1/4"	9"	20-1/4"	48-1/2"	9"	23"	21-1/2"	12"	N/A	2"	10"	10"	1696
PBN4000	16-1/4"	10-1/2"	20"	54"	8-3/4"	22-1/4"	21-1/4"	12"	58-1/2"	2-1/2"	10"	12"	1841
PBN5000	17-1/2"	11"	23-1/2"	65-1/2"	11-1/2"	22"	24"	13-1/4"	69-1/2"	2-1/2"	12"	14"	2152

POWER-fin®



Codes & Registrations

ANSI Z21.13/CSA Certified
ASME Certified, "H" Stamp / National Board
California Code Compliant
Bay Area Air Quality Management District Qualified
CSD1 / Factory Mutual / GE Gap Compliant
Canadian Registration Number (CRN)
AHRI Certified

Standard Features

87% Thermal Efficiency (AHRI)
Modulating Burner with 5:1 Turndown
Outdoor Ready
CSD-1 Compliant
Direct-Spark Ignition
Low NOx Operation
Sealed Combustion
160 psi Working Pressure
On/Off Switch
Adjustable High Limit with Manual Reset
Condensate Trap w/Blocked Drain Switch
Drain Valve
System Sensor
Outdoor Air Sensor
Inlet & Outlet Temperature Sensors
High-Voltage Terminal Strip
Low-Voltage Terminal Strip
50 psi ASME Relief Valve
Temperature & Pressure Gauge
Zero Clearances to Combustible Materials
Low & High Manual Reset Gas Pressure Switches
10-Year Limited Warranty
(See Warranty for Details)
1-Year Warranty on Parts
(See Warranty for Details)

Smart Touch™ Features

CON-X-US Remote Connect

Full-Color 8" Touchscreen LCD Display

Built-in Cascading Sequencer for up to 8 Boilers

- › Built-in Redundancy
- › Cascade Multiple Sized Boilers
- › Lead/Lag Cascade
- › Efficiency Optimized Cascade

Front-End Loading Capability with Crest Boilers

Building Management System Integration with 0-10 VDC Input

Outdoor Reset Control

Password Security

Domestic Hot Water Prioritization

- › DHW tank piped with priority in the boiler loop
- › DHW tank piped as a zone in the system with the pumps controlled by the Smart System
- › DHW Modulation Limiting
- › Separately Adjustable SH/DHW Switching Times

Low Water Flow Safety Control & Indication

Inlet & Outlet Temperature Readout

Freeze Protection

Service Reminder

Time Clock

Data Logging

- › Hours Running, Space Heating
- › Hours Running, Domestic Hot Water
- › Hours Running, Modulation Rate
- › Ignition Attempts
- › Last 10 Lockouts

Programmable System Efficiency Optimizers

- › Night Setback
- › Anti-Cycling
- › Outdoor Air Reset Curve
- › Ramp Delay
- › Boost Temperature & Time
- › Modulation Factor Control

Three Pump Control

- › System Pump
- › Boiler Pump
- › Domestic Hot Water Pump

High-Voltage Terminal Strip

- › 240V/60 Hertz/1 Phase Power Supply (PB2500-PB3000)
- › 208V/60 Hertz/3 Phase Power Supply (PB3500-PB4000)
- › 480V/60 Hertz/3 Phase Power Supply (PB5000)
- › System Pump, Boiler Pump & DHW Pump Power

Low-Voltage Terminal Strip

- › 24 VAC Auxiliary Device Relay
- › Auxiliary Proving Switch Contacts
- › Alarm on Any Failure Contacts
- › Runtime Contacts
- › DHW Thermostat Contacts
- › Unit Enable/Disable Contacts
- › System Sensor Contacts
- › DHW Tank Sensor Contacts
- › Outdoor Air Sensor Contacts
- › Cascade Contacts
- › 0-10V DC BMS External Control Contact
- › 3 Way Valve Contacts

Firing Codes

M9	Standard Construction
M7	California Code

Optional Equipment

Alarm Bell
Outdoor Kit
Low Temperature Valve
Motorized Mixing Valve
BMS Gateway to LON or BacNet IP
BACnet MSTP Communications
Modbus Communications
Cupro-Nickel Heat Exchanger
Wireless Outdoor Sensor
Low Water Cutoff w/ Manual Reset & Test
Electrical Options (shipped loose)

- › 208V/3PH/60 Hz
- › 480V/3PH/60 Hz
- › 600V/3PH/60 Hz



Lochinvar, LLC
300 Maddox Simpson Parkway
Lebanon, Tennessee 37090
P: 615.889.8900 | F: 615.547.1000
Lochinvar.com

