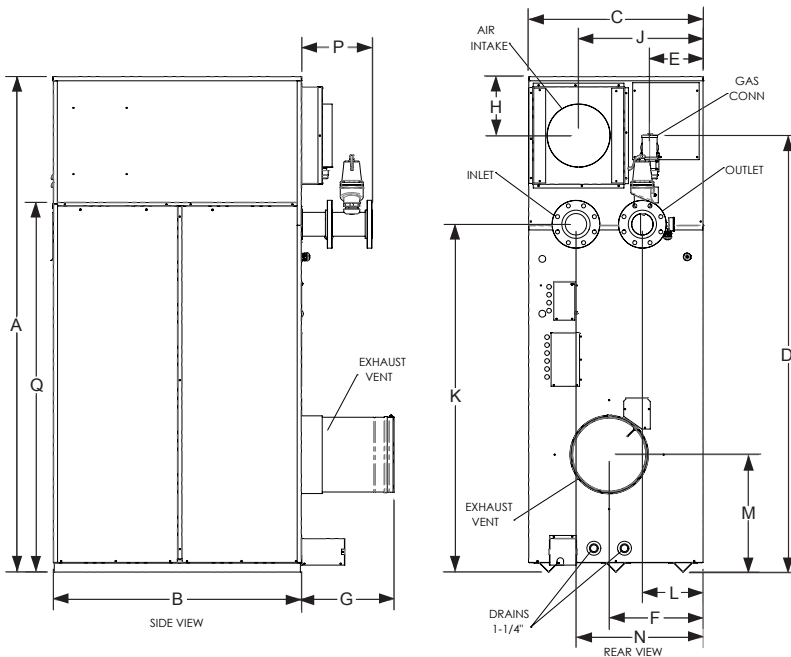




**POWERFIN
COMMERCIAL BOILER
Submittal Sheet
PBXT-Sub-01**

POWER FIN COMMERCIAL BOILER

JOB NAME _____
LOCATION _____
ENGINEER _____
WHOLESALE _____
CONTRACTOR _____
MODEL NO. _____
TYPE GAS _____
EQUIPMENT TAG _____
NOTES



Model Number Guide

PB	N	2500	M9
Model	Natural Gas	Btu/hr Input	Firing Controls

Power-Fin Boiler,
 Natural Gas,
 2,500,000 Btu/hr input,
 M9 firing controls

POWER-FIN BOILER					DIMENSIONS AND SPECIFICATIONS										
Model Number	Input MBH	AHRI Thermal %	Output MBH	Net AHRI Rating MBH	A	B	C	D	E	F					
PBN2500	2,500	87.0%	2,175	1,891	59"	44-1/2"	29-3/4"	49-3/4"	4"	15"					
PBN3000	3,000	87.0%	2,610	2,270	65"	44-1/2"	29-3/4"	55-3/4"	4"	15"					
PBN3500	3,500	87.0%	3,045	2,648	70-1/4"	47-1/4"	29-3/4"	62-1/2"	8-1/4"	15"					
PBN4000	4,000	87.0%	3,480	3,026	79-3/4"	47-1/4"	29-3/4"	68-3/4"	8-1/4"	15"					
PBN5000	5,000	87.0%	4,350	3,783	93-1/4"	46-3/4"	32-3/4"	82-1/4"	10"	17-3/4"					
Model Number	G	H	J	K	L	M	N	P	Q	Gas Conn	Air Inlet	Vent Outlet	Shipping Weight		
PBN2500	16"	9"	20-1/4"	37"	8-3/4"	23"	21-1/4"	12"	N/A	2"	9"	9"	1470		
PBN3000	16-1/4"	9"	20-1/4"	43"	8-3/4"	23"	21-1/4"	12"	N/A	2"	9"	10"	1550		
PBN3500	16-1/4"	9"	20-1/4"	48-1/2"	9"	23"	21-1/2"	12"	N/A	2"	10"	10"	1696		
PBN4000	16-1/4"	10-1/2"	20"	54"	8-3/4"	22-1/4"	21-1/4"	12"	58-1/2"	2-1/2"	10"	12"	1841		
PBN5000	17-1/2"	11"	23-1/2"	65-1/2"	11-1/2"	22"	24"	13-1/4"	69-1/2"	2-1/2"	12"	14"	2152		

Note: Change "N" to "L" for LP Gas Model. All Water Connections are 4"

POWER-fin®

CODES & REGISTRATIONS

ANSI Z21.13/CSA Certified
 ASME Certified, "H" Stamp / National Board
 California Code Compliant
 BAAQMD Certified
 CSD1 / Factory Mutual / GE Gap Compliant
 Canadian Registration Number (CRN)
 AHRI Certified



STANDARD FEATURES

87% Thermal Efficiency (AHRI)
 Modulating Burner with 5:1 Turndown
 Outdoor Ready
 CSD-1 Compliant
 Direct-Spark Ignition
 Low NOx Operation
 Sealed Combustion
 160 psi Working Pressure
 On/Off Switch
 Adjustable High Limit with Manual Reset
 Condensate Trap w/Blocked Drain Switch
 Drain Valve
 System Sensor
 Outdoor Air Sensor
 Inlet & Outlet Temperature Sensors
 High-Voltage Terminal Strip
 Low-Voltage Terminal Strip
 50 psi ASME Relief Valve
 Temperature & Pressure Gauge
 Zero Clearances to Combustible Materials
 Low & High Manual Reset Gas Pressure Switches
 10-Year Limited Warranty (See Warranty for Details)
 1-Year Warranty on Parts (See Warranty for Details)

SMART TOUCH™ FEATURES

CON-X-US Remote Connect
Full-Color 8" Touchscreen LCD Display
Built-in Cascading Sequencer for up to 8 Boilers

- › Built-in Redundancy
- › Cascade Multiple Sized Boilers
- › Lead/Lag Cascade
- › Efficiency Optimized Cascade

Front-End Loading Capability with Crest Boilers
Building Management System Integration with 0-10 VDC Input
Outdoor Reset Control
Password Security
Domestic Hot Water Prioritization

- › DHW tank piped with priority in the boiler loop
- › DHW tank piped as a zone in the system with the pumps controlled by the Smart System
- › DHW Modulation Limiting
- › Separately Adjustable SH/DHW Switching Times

Low Water Flow Safety Control & Indication
Inlet & Outlet Temperature Readout
Freeze Protection
Service Reminder
Time Clock
Data Logging

- › Hours Running, Space Heating
- › Hours Running, Domestic Hot Water
- › Hours Running, Modulation Rate
- › Ignition Attempts

› Last 10 Lockouts Programmable System Efficiency Optimizers

- › Night Setback
- › Anti-Cycling
- › Outdoor Air Reset Curve
- › Ramp Delay
- › Boost Temperature & Time
- › Modulation Factor Control

Three Pump Control

- › System Pump
- › Boiler Pump
- › Domestic Hot Water Pump

High-Voltage Terminal Strip

- › 240V/60 Hertz/1 Phase Power Supply (PB2500-PB3000)
- › 208V/60 Hertz/3 Phase Power Supply (PB3500-PB4000)
- › 480V/60 Hertz/3 Phase Power Supply (PB5000)
- › System Pump, Boiler Pump and DHW Pump Power

Low-Voltage Terminal Strip

- › 24 VAC Auxiliary Device Relay
- › Auxiliary Proving Switch Contacts
- › Alarm on Any Failure Contacts
- › Runtime Contacts
- › DHW Thermostat Contacts
- › Unit Enable/Disable Contacts
- › System Sensor Contacts
- › DHW Tank Sensor Contacts
- › Outdoor Air Sensor Contacts
- › Cascade Contacts
- › 0-10V DC BMS External Control Contact
- › 3 Way Valve Contacts

FIRING CODES

M9	Standard Construction
M7	California Code

OPTIONAL EQUIPMENT

Alarm Bell
 Outdoor Kit
 Low Temperature Valve
 Motorized Mixing Valve
 BMS Gateway to LON or BacNet IP
 BACnet MSTP Communications
 Modbus Communications
 Cupro-Nickel Heat Exchanger
 Wireless Outdoor Sensor
 Low Water Cutoff
 w/ Manual Reset & Test
 30 psi ASME Relief Valve
 75 psi ASME Relief Valve
 100 psi ASME Relief Valve
 125 psi ASME Relief Valve
 150 psi ASME Relief Valve
 Electrical Options (shipped loose)

- › 208V/3PH/60 Hz
- › 480V/3PH/60 Hz
- › 600V/3PH/60 Hz



Lochinvar, LLC
 300 Maddox Simpson Parkway
 Lebanon, Tennessee 37090
 P: 615.889.8900 | F: 615.547.1000
 Lochinvar.com

