



Lochinvar[®]
High Efficiency Water Heaters, Boilers and Pool Heaters

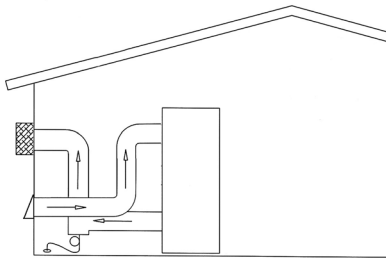
**POWER-FIN[®] 1.5 0 2.0 MBH
VENTING OPTIONS
Submittal Sheet**

PFXV-Sub-01

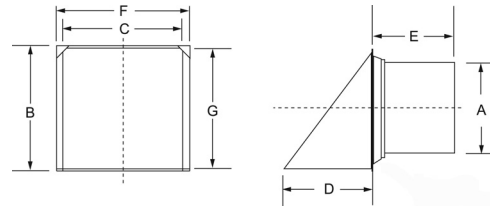
POWER-FIN[®] VENTING (PB/PF 1.5-2.0)

JOB NAME _____
LOCATION _____
ARCH./ENGR. _____
WHOLESALE _____
MECH. CONTRACTOR _____
MODEL NO. _____
NOTES _____

HORIZONTAL DIRECT VENT



Horizontal Direct Vent kit supplied with air inlet cap and exhaust cap. Vents horizontally up to 50 equivalent feet, using Category IV approved vent material. Directly draws combustion air 50 equivalent feet from a side wall. Deduct 5 ft. per elbow.

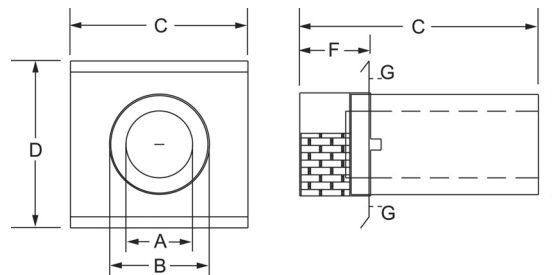


SIDEWALL AIR INLET CAP

Air Inlet	A	B	C	D	E	F	G
SAK3004	6"	9"	8"	4-1/2"	2-1/2"	9"	8-1/2"
SAK3005	7"	12"	11"	7"	2-1/2"	12"	11-1/2"
SAK3006	8"	12"	11"	7"	2-1/2"	12"	11-1/2"

**DIRECT VENT KIT
AIR INTAKE CAP AND VENT CAP
Sold Separately or in Kits**

Model	Kit #	Air Inlet	Vent Cap
1501	HDK3049	SAK3004	SVK3018
1701	HDK3050	SAK3005	SVK3019
2001	HDK3051	SAK3006	SVK3068



SIDEWALL VENT CAP

Vent Cap	A	B	C	D	E	F	G
SVK3018	6"	9"	16"	15"	21-1/2"	6"	11"
SVK3019	7"	10"	17"	16"	23-1/2"	8"	12"
SVK3068	8"	11"	18"	17"	23-1/2"	8"	13"



Lochinvar[®]
High Efficiency Water Heaters, Boilers and Pool Heaters

Lochinvar Corporation • 300 Maddox Simpson Pkwy • Lebanon, TN 37090 • 615-889-8900/Fax: 615-547-1000

www.Lochinvar.com