



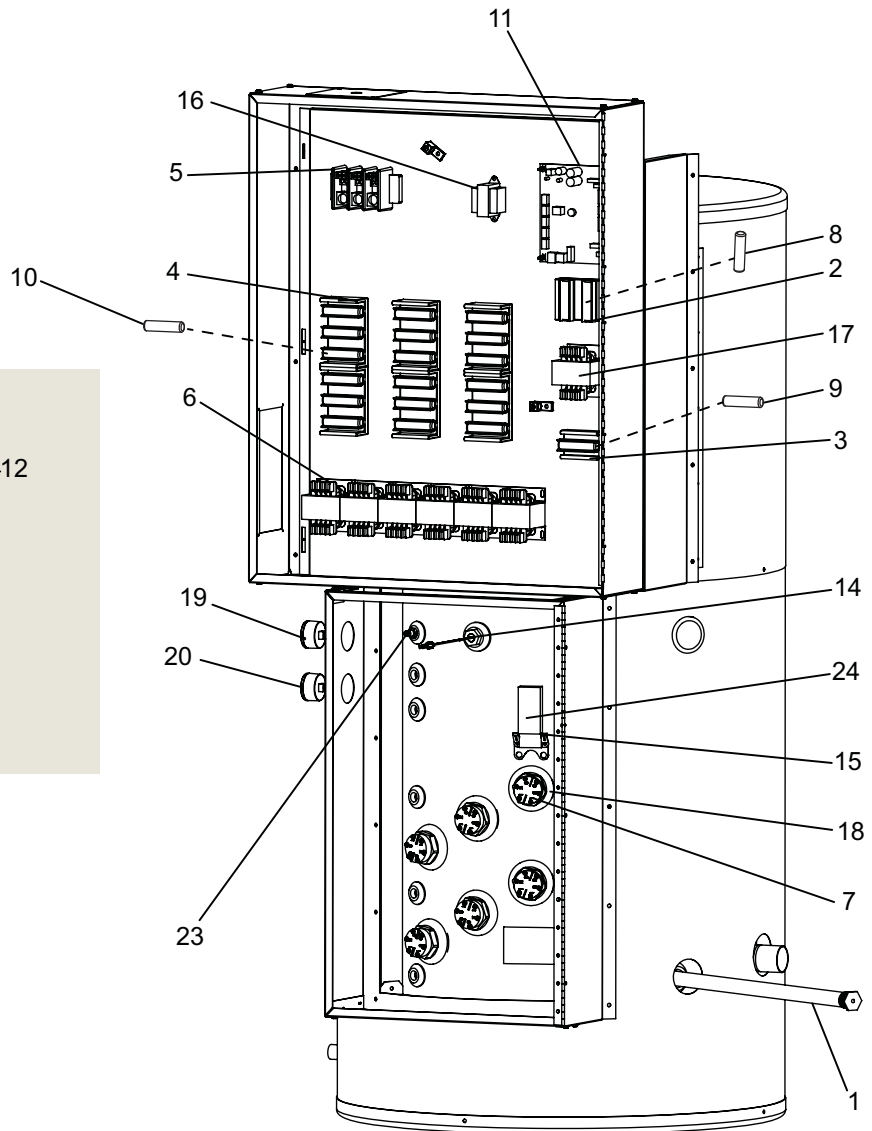
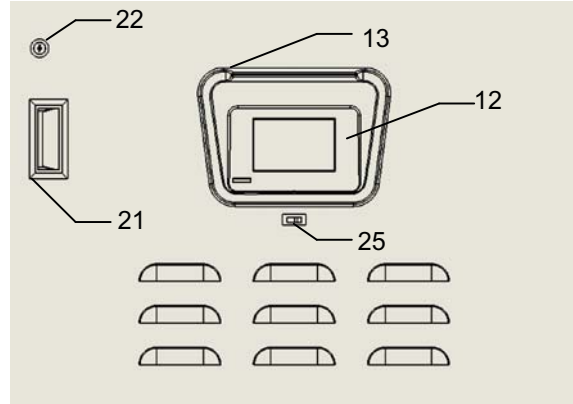
PARTS & SERVICE DEPARTMENT
 Nashville, Tennessee
 877-554-5544 • Fax: 615-882-2918
 parts_team@lochinvar.com
 www.Lochinvar.com

Replacement Parts List

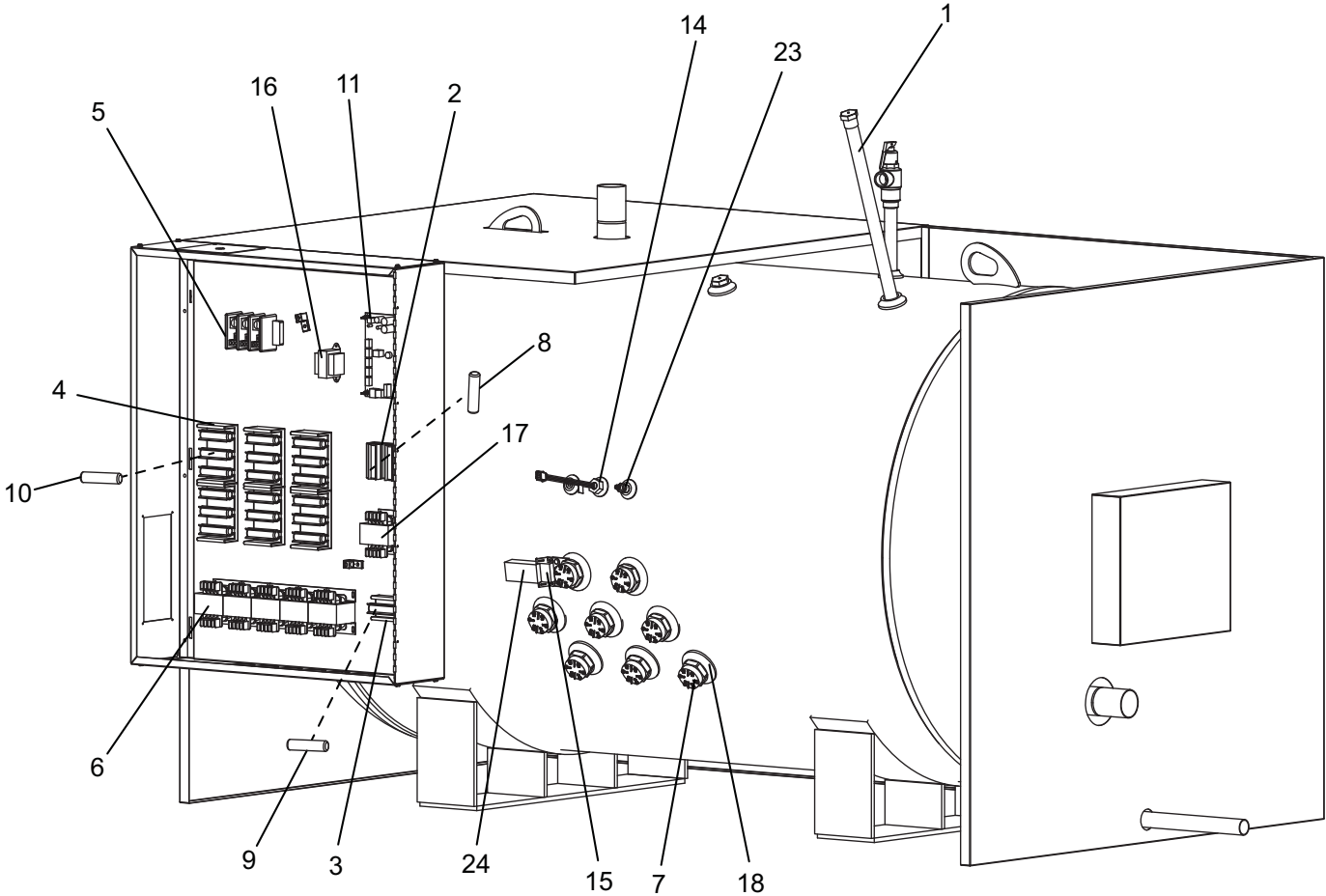
**Commercial Electric
 Custom Hi-Power®
 CHV and CHH 0150 - 1000**

CHV MODELS

PANEL DOOR VIEW



CHH MODELS



ITEM NO.	PART NO.	DESCRIPTION	MODEL NO.					
ANODE RODS								
1	100208654	ANODE ROD, 1" NPT X 24" LONG	CHV 150 GAL & 200 GAL (2 REQ) CHH 250 GAL & 300 GAL (3 REQ)					
1	100232745	ANODE ROD, 1" NPT X 36" LONG	CHV 500 - 600 GAL (3 REQ) CHH 400 - 600 GAL (3 REQ) CHV & CHH 800 - 1000 GAL (4 REQ)					
1	100208663	ANODE ROD, 1" NPT X 48" LONG	CHV & CHH 1250 - 1500 GAL (4 REQ)					
1	100278130	ANODE ROD, 1" NPT X 62" LONG	CHV 250 GAL & 300 GAL (1 REQ) CHV & CHH 2000 - 2500 GAL (4 REQ)					
1	100208664	ANODE ROD, 3/4" NPT X 52" LONG	CHV 400 GAL (2 REQ)					
FUSE BLOCKS								
2	100306547	FUSE BLOCK (PRIMARY CONTROL CIRCUIT)	600V, 30A*					
2	100308479	FUSE BLOCK (PRIMARY CONTROL CIRCUIT)	250V, 30A*					
3	100308480	FUSE BLOCK (SECONDARY CONTROL CIRCUIT)	ALL					
4	100308601	FUSE BLOCK	300V, 60A*					
4	100308693	FUSE BLOCK	600V, 60A*					
TERMINAL BLOCKS								
5	100308604	TERMINAL BLOCK	600V, 310A, 2 POLE					
5	100308605	TERMINAL BLOCK	600V, 175A, 3 POLE					
5	100308606	TERMINAL BLOCK	600V, 310A, 3 POLE					
5	100308607	TERMINAL BLOCK	600V, 380A, 3 POLE					
CONTACTORS								
6	100208805	CONTACTOR, 50 AMP	ALL					
SCREW-IN TYPE ELEMENTS - 1 1/2" NPT								
	WATTAGE	208 VOLT	240 VOLT	380 VOLT	400 VOLT	415 VOLT	480 VOLT	600 VOLT
		PART NO.	PART NO.	PART NO.	PART NO.	PART NO.	PART NO.	PART NO.
7	12000	100308608	100308611	100308613	100308616	100308619	100308622	100308625
7	15000	100308609	100308612	100308867	100308617	100308620	100308623	100308626
7	18000	100308610	N/A	100308615	100308618	100308621	100308624	100309454
FUSES								
8	100208810	FUSE, 600V (PRIMARY CONTROL CIRCUIT)	15 AMP*					
9	100308628	FUSE, 250V	15 AMP*					
10	100208813	FUSE, 300V	35 AMP*					
10	100308630	FUSE, 300V	40 AMP*					
10	100308641	FUSE, 300V	50 AMP*					
10	100208814	FUSE, 300V	60 AMP*					
10	100308643	FUSE, 600V	35 AMP*					
10	100208812	FUSE, 600V	40 AMP*					
10	100308645	FUSE, 600V	50 AMP*					
10	100309455	FUSE, 600V	60 AMP*					
THERMOSTATS								
11	100304030	BOARD, CONTROL	ALL					
12	100308647	BOARD, DISPLAY, COMMUNICATION	ALL					
13	100308648	BEZEL, DISPLAY	ALL					
14	100308649	PROBE, TEMPERATURE	ALL					
15	100308652	HI LIMIT	ALL					
TRANSFORMERS								
16	100308653	TRANSFORMER, 120-24V	ALL					
17	100308654	TRANSFORMER, 240/480-120V	UP TO 100VA					
17	100308655	TRANSFORMER, 240/480-120V	101-150VA					
17	100308656	TRANSFORMER, 240/480-120V	151-250VA					
17	100308657	TRANSFORMER, 240/480-120V	251-350VA					
PLEASE HAVE MODEL NUMBER AND SERIAL NUMBER WHEN ORDERING PARTS.								
*VOLTAGE AND AMPERAGE INFORMATION IS ON THE PART								

ITEM NO.	PART NO.	DESCRIPTION	MODEL NO.
TRANSFORMERS (CONTINUED)			
17	100308658	TRANSFORMER, 380/208-120V	UP TO 100VA
17	100308660	TRANSFORMER, 380/208-120V	101-250VA
17	100308661	TRANSFORMER, 415/600-120V	UP TO 50VA
17	100308662	TRANSFORMER, 415/600-120V	51 - 250VA
MISCELLANEOUS			
18	100208099	GASKET, ELEMENT SCREW-IN	ALL
19	100308664	GAUGE, TEMPERATURE 30 - 240°F	OPTIONAL
20	100308665	GAUGE, PRESSURE 0 - 160 PSI	OPTIONAL
21	100308666	HANDLE, DOOR	ALL
22	100308667	LOCK, KEY	ALL
23	100208662	PROBE, LWCO	ALL
23	100308669	PROBE, LWCO	OPTIONAL
23	100308670	PROBE, LWCO EXTENTION, 7-1/2"	OPTIONAL
24	100308671	COVER, HI LIMIT	ALL
25	100308672	PILOT SWITCH WITH LIGHT	ALL
-	100208445	RELIEF VALVE 125# W.P.	ALL
-	100208444	RELIEF VALVE 150# W.P.	OPTIONAL
-	100308675	HINGE	ALL
-	100308676	SAFETY DOOR INTERLOCK	OPTIONAL
-	100308677	RELAY, 120V (USED WITH MULTIPLE CONTROL BOARDS)	ALL
-	100308678	CABLE COMMUNICATION	ALL
-	100308679	OVERLAY DISPLAY	ALL
-	100308680	BOOT, LWCO	ALL
-	100308681	PUMP	CHH
-	100308682	GASKET, HAND HOLE 4" X 6", ONE BOLT	OPTIONAL
-	100208765	GASKET, MANWAY 11" X 15"	OPTIONAL
-	100208766	GASKET, MANWAY 12" X 16"	OPTIONAL
-	100308685	ALARM BELL	OPTIONAL
-	100233706	GASKET, SIX BOLT ASME	ALL
-	100308688	COVER, CLEANOUT SIX BOLT ASME	ALL
-	100308689	BLOCK-OFF PLATE, ELEMENT ACCESS SCREW-IN TYPE	ALL

PLEASE HAVE MODEL NUMBER AND SERIAL NUMBER WHEN ORDERING PARTS.

*VOLTAGE AND AMPERAGE INFORMATION IS ON THE PART