



Heat Pump Residential Electric Water Heaters

Heat Pump Models

Lochinvar's Heat Pump residential electric models are available in 50, 66 and 80 gallon capacities and feature a heat pump operating with environmentally-friendly R134a refrigerant that will absorb ambient heat from the surrounding air reducing electrical consumption by up to 73%.

Standard Features

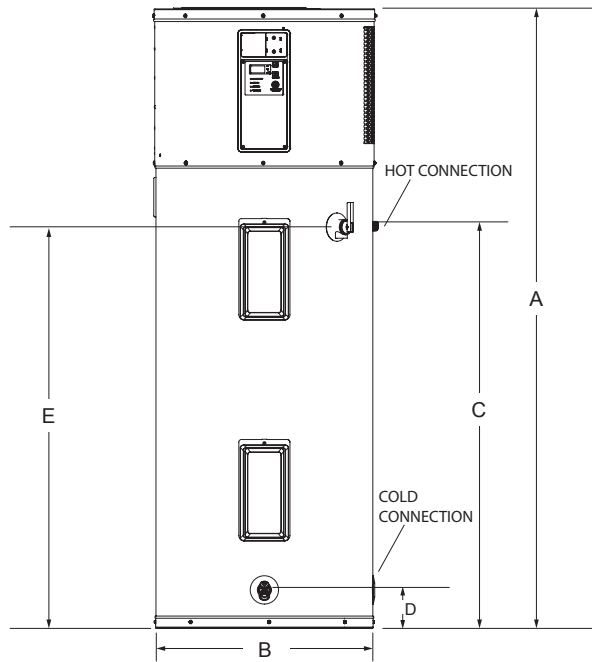
- **ENERGY STAR®** - The Heat Pump water heater meets the ENERGY STAR requirement with 2.73 to 3.52 Energy Factor in hybrid mode and are eligible for most utility rebate programs.
- **Code Compliance** – Complies with the Federal Energy Conservation Standards effective April 16, 2015, in accordance with the Energy Policy and Conservation Act, (EPCA), as amended.
- **Electronic Control** – The electronic control features an LED display and four operating modes to match the heating requirements of the environment. The LED display will also read-out current status, set point and fault codes.
- **Immersion Heating Elements** – Zinc-coated copper sheath design for longer life in hard, aggressive water. The elements screw in for easy service and replacement.
- **Glass-Lined Steel Tank** – The durable glass lining is fused to the steel tank at 1600°F to assure lasting protection against rust and corrosion while providing clear, clean hot water. 300 PSI test pressure; 150 PSI working pressure.
- **Non-CFC Foam Insulation** – A uniform coverage of thick closed-cell foam insulation minimizes standby heat loss, maximizes heat retention and delivers a high Energy Factor.
- **Tank Saver Anode** – A large diameter, high capacity anode inhibits corrosion of the tank interior for long, trouble-free service.
- **Heat Trap** – Heat traps are built into the inlet and outlet connections to eliminate heat migration and heat loss in the water piping.
- **Temperature & Pressure Relief Valve** – Factory installed for optimum safety.
- **Brass Drain Valve** – An enhanced ball valve design for effective drainage and positive shut-off.
- **10 Year Limited Tank & Parts Warranty*** – See warranty sheet for details.

** 1-year limited tank & parts warranty when installed in a commercial application.*



All models meet or exceed Federal and ASHRAE Energy Efficiency Standards

Dimensions and Specifications



FOR EASE IN ORDERING
BY MODEL NUMBER

HP	A	052	K	D
HEAT PUMP	VOLTAGE	TANK CAPACITY	ELEMENT WATTAGE	ELEMENT QTY

This heater has a 10 year warranty. It is a heat pump model, has a 50 gallon capacity with a 240 volt 4500 watt upper element and 4500 watt lower element.

Model Number	Nominal Gallon Cap.	Rated Storage Cap.	Input Watts	Standard Voltage	1st Hr. Rating	UEF	A	B	C	D	E	Ship. Wt.
HPA052KD	50	46	4500	208V/240V	66	3.42	63"	22"	40-1/2"	3-3/4"	40-1/2"	196
HPA068KD	66	67	4500	208V/240V	66	3.52	61"	27"	38"	4"	38"	289
HPA082KD	80	82	4500	208V/240V	84	2.73	69"	27"	46"	4"	46"	307

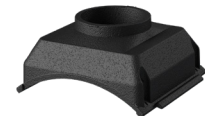
Water connections are 3/4" NPT.

Available Air Kits

- Inlet & Outlet Outdoor Air Kit** – The Inlet & Outlet Air Kit adapts the Heat Pump water heater to work with outdoor air. This allows the Heat Pump to be installed in confined spaces and spaces with conditioned air. The kit works with standard 8" flexible duct (field supplied) up to 10 total feet.
- Booster Fan Kit** – By adding the Booster Fan Kit to the Inlet & Outlet Air Kit, the flexible duct can extend to 25 total feet.



Inlet Adapter



Outlet Adapter

Part Number	Description	Shipping Weight
100234320	Inlet & Outlet Outdoor Air Kit	5
100131328	Booster Fan Kit	10

Certified for Potable Water and Space Heating Applications

This water heater is suitable for water heating and space heating. Toxic chemicals, such as those used for boiler water treatment shall NEVER be introduced into this system. This water heater may NEVER be connected to any existing heating system or components previously used with non-potable water heating appliances.



Lochinvar, LLC
300 Maddox Simpson Parkway
Lebanon, Tennessee 37090
P: 615.889.8900 / F: 615.547.1000
Lochinvar.com

