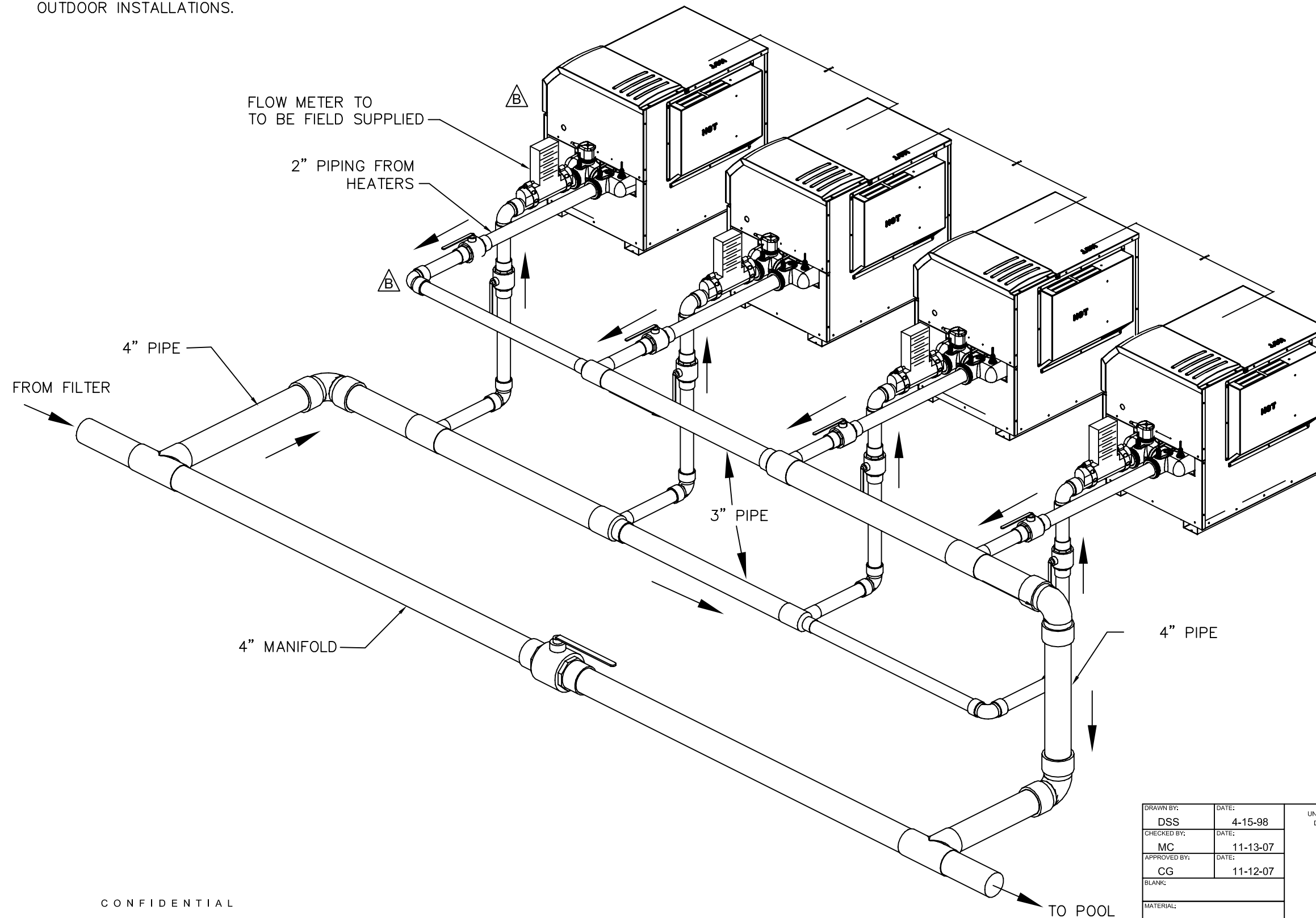


- NOTE:
1. AN APPROPRIATE RELIEF VALVE MUST BE INSTALLED WHEN ISOLATED VALVES ARE SUPPLIED FOR EACH POOL HEATER.
  2. MAINTAIN A MINIMUM OF 48" BETWEEN THE VENT CAPS ON MULTIPLE UNIT OUTDOOR INSTALLATIONS.

RV	DESCRIPTION	ECO	DATE	APV
-	INITIAL RELEASE	4858	4-21-98	JM
A	ADD PIPES	061130-3	12-15-06	DG
B	UPDATE PIPES & UNITS	071001-2	11-12-07	DG
C	UPDATE PIPING POR TO MARKINGS		01/07/09	MC



CONFIDENTIAL

THIS DRAWING IS THE PROPERTY OF LOCHINVAR CORPORATION AND CAN NOT BE ALTERED, REPRODUCED OR DISTRIBUTED WITHOUT WRITTEN PERMISSION

DRAWN BY: DSS	DATE: 4-15-98
CHECKED BY: MC	DATE: 11-13-07
APPROVED BY: CG	DATE: 11-12-07
MATERIAL:	
THIRD ANGLE PROJECTION	

UNLESS OTHERWISE SPECIFIED  
DIMENSIONS ARE IN INCHES  
FINISH IN MICROINCHES

DECIMAL  
.X ±.125  
.XX ±.060  
.XXX ±.031

ANGULAR  
± 1°

FINISH:  $\sqrt{63}$

DEBURR AND BREAK  
ALL SHARP EDGES .005 MAX  
DO NOT SCALE THIS DRAWING

**Lochinvar Corporation**  
300 Maddox Simpson Parkway  
Lebanon, TN 37090  
TEL 615-889-8900 FAX 615-547-1000  
www.lochinvar.com  
HIGH EFFICIENCY WATER HEATERS AND BOILERS

**Title**  
(4) POOL HEATERS W/ REVERSE FLOW

**Model**  
"ER" POOL HEATER

**Dwg No.**  
SLS0138

**REV**  
B

**SIZE**  
B

**DO NOT SCALE**

**SHEET 1 OF 1**