



Lochinvar[®]
HIGH EFFICIENCY BOILERS & WATER HEATERS

**LOCK-TEMP[®] BARE
STORAGE TANK
Submittal Sheet**

TB-Sub-08a

LOCK-TEMP[®] BARE STORAGE TANKS

JOB NAME _____
LOCATION _____
ENGINEER _____
WHOLESALE _____
MECH. CONTRACTOR _____
MODEL NO. _____
GALLON CAPACITY _____
TANK CONSTRUCTION _____
WORKING PRESSURE _____
DIMENSIONS _____
LINING _____
NOTES

TAPPINGS: Inlet _____ Outlet _____ Circulating _____

Standard Features

- Five-Year Limited Warranty
(See warranty for details)
- Lock-Temp Baffle
- Magnesium Anode (Glass-lined only)
- ASME Certified, "HLW" Stamped
- 125psi Working Pressure

Optional Tank Linings

- Glass Lined
- Cement Lined

Optional Equipment

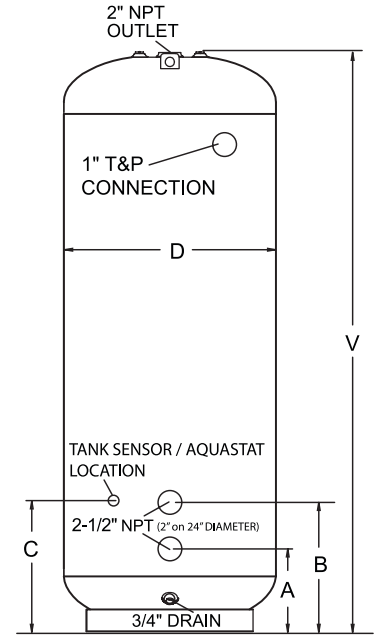
Place an X in the box by all options that apply

- 150psi Working Pressure
- Additional Baffle
- Handhole (4"x6")
- Tank Saddles
- Lifting Lugs (pair)
- Flanged Connection _____"
- Extra Tapping _____"
- Manway (Optional on 28" to 36" diameter only)

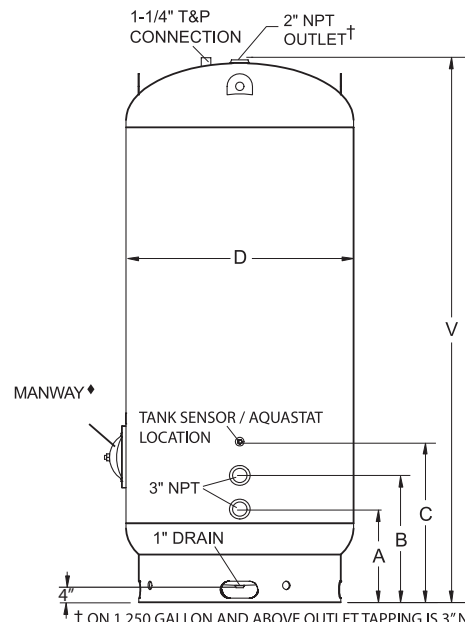
Note: All tanks installed to use potable hot water must be field insulated to meet the latest ASHRAE standards.

Dimensions and Specifications for Bare Tanks Vertical/Horizontal

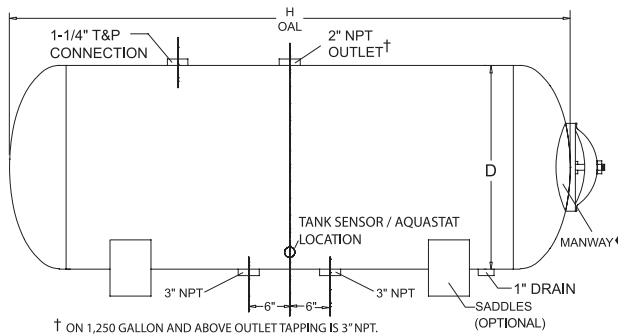
Gal. Cap.	Dimensions			Weights			Tappings		
	D Dia.	V Ht.	H Lgth.	Glass-Lined 125 psi	Cement Lined 150 psi	Cement Lined	A	B	C
118	24"	64"	60"	368	368	-	13-1/2"	21-1/2"	29-1/2"
141	24"	76"	72"	428	428	-	13-1/2"	21-1/2"	29-1/2"
188	24"	100"	96"	556	556	-	13-1/2"	21-1/2"	29-1/2"
235	24"	124"	120"	684	684	-	13-1/2"	21-1/2"	29-1/2"
175	28"	65"	-	353	353	-	11"	17"	16"
200	28"	76"	-	488	488	-	11"	17-1/2"	16"
147	30"	52"	48"	400	400	695	15-3/4"	23-3/4"	31-3/4"
184	30"	64"	60"	468	468	812	15-3/4"	23-3/4"	31-3/4"
220	30"	76"	72"	548	548	958	15-3/4"	23-3/4"	31-3/4"
257	30"	87"	83"	628	628	1,103	15-3/4"	23-3/4"	31-3/4"
294	30"	100"	96"	701	701	1,242	15-3/4"	23-3/4"	31-3/4"
367	30"	124"	120"	868	868	1,540	15-3/4"	23-3/4"	31-3/4"
265	36"	64"	60"	577	577	995	17-1/2"	25-1/2"	33-1/2"
318	36"	76"	72"	673	673	1,173	17-1/2"	25-1/2"	33-1/2"
370	36"	87"	83"	770	770	1,343	17-1/2"	25-1/2"	33-1/2"
423	36"	100"	96"	866	866	1,513	17-1/2"	25-1/2"	33-1/2"
528	36"	124"	120"	1,058	1,058	1,861	17-1/2"	25-1/2"	33-1/2"
432	42"	76"	72"	795	909	1,385	18-3/4"	26-3/4"	34-3/4"
504	42"	88"	84"	908	1,050	1,587	18-3/4"	26-3/4"	34-3/4"
576	42"	100"	96"	1,020	1,190	1,790	18-3/4"	26-3/4"	34-3/4"
720	42"	124"	120"	1,245	1,470	2,195	18-3/4"	26-3/4"	34-3/4"
864	42"	148"	144"	1,470	1,751	2,601	18-3/4"	26-3/4"	34-3/4"
1,008	42"	172"	168"	1,695	2,031	3,006	18-3/4"	26-3/4"	34-3/4"
658	48"	88"	84"	1,346	1,346	2,124	20-3/4"	28-3/4"	36-3/4"
752	48"	100"	96"	1,507	1,507	2,392	20-3/4"	28-3/4"	36-3/4"
940	48"	124"	120"	1,828	1,828	2,918	20-3/4"	28-3/4"	36-3/4"
1,128	48"	148"	144"	2,150	2,150	3,444	20-3/4"	28-3/4"	36-3/4"
1,315	48"	172"	168"	2,471	2,471	3,970	20-3/4"	28-3/4"	36-3/4"
1,503	48"	196"	192"	2,793	2,793	4,505	20-3/4"	28-3/4"	36-3/4"
951	54"	100"	96"	1,721	1,972	2,729	22-3/4"	30-3/4"	38-3/4"
1,189	54"	124"	120"	2,083	2,423	3,320	22-3/4"	30-3/4"	38-3/4"
1,427	54"	148"	144"	2,451	2,881	3,919	22-3/4"	30-3/4"	38-3/4"
1,665	54"	172"	168"	2,807	3,326	4,511	22-3/4"	30-3/4"	38-3/4"
1,903	54"	196"	192"	3,168	3,777	5,102	22-3/4"	30-3/4"	38-3/4"
2,141	54"	220"	216"	3,530	4,228	5,701	22-3/4"	30-3/4"	38-3/4"
1,469	60"	124"	120"	2,784	3,221	4,177	24-3/4"	32-3/4"	40-3/4"
1,763	60"	148"	144"	3,267	3,823	4,913	24-3/4"	32-3/4"	40-3/4"
2,056	60"	172"	168"	3,749	4,425	5,658	24-3/4"	32-3/4"	40-3/4"
2,350	60"	196"	192"	4,231	5,026	6,394	24-3/4"	32-3/4"	40-3/4"
2,644	60"	220"	216"	4,713	5,628	7,130	24-3/4"	32-3/4"	40-3/4"
2,115	72"	124"	120"	3,416	3,904	5,104	27-3/4"	35-3/4"	43-3/4"
2,538	72"	148"	144"	3,995	4,627	5,995	27-3/4"	35-3/4"	43-3/4"
2,961	72"	172"	168"	4,575	5,350	6,885	27-3/4"	35-3/4"	43-3/4"
3,384	72"	196"	192"	5,154	6,073	7,767	27-3/4"	35-3/4"	43-3/4"
3,807	72"	220"	216"	5,733	6,795	8,658	27-3/4"	35-3/4"	43-3/4"



24" & 28" DIAMETER TANKS



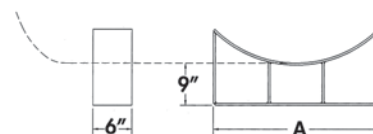
30" DIAMETER AND LARGER TAPPING TANKS



† ON 1,250 GALLON AND ABOVE OUTLET TAPPING IS 3" NPT.

Tank Saddle Dimensions

TANK DIAMETER						
30	36	42	48	54	60	72
A	21"	25"	29"	34"	48"	62"



NOTE: Alternate saddle heights are available. (Consult factory)



Lochinvar, LLC
 300 Maddox Simpson Parkway
 Lebanon, Tennessee 37090
 P: 615.889.8900 / F: 615.547.1000
 Lochinvar.com